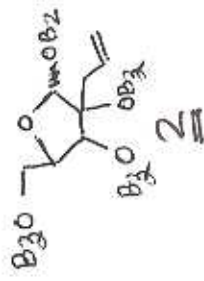
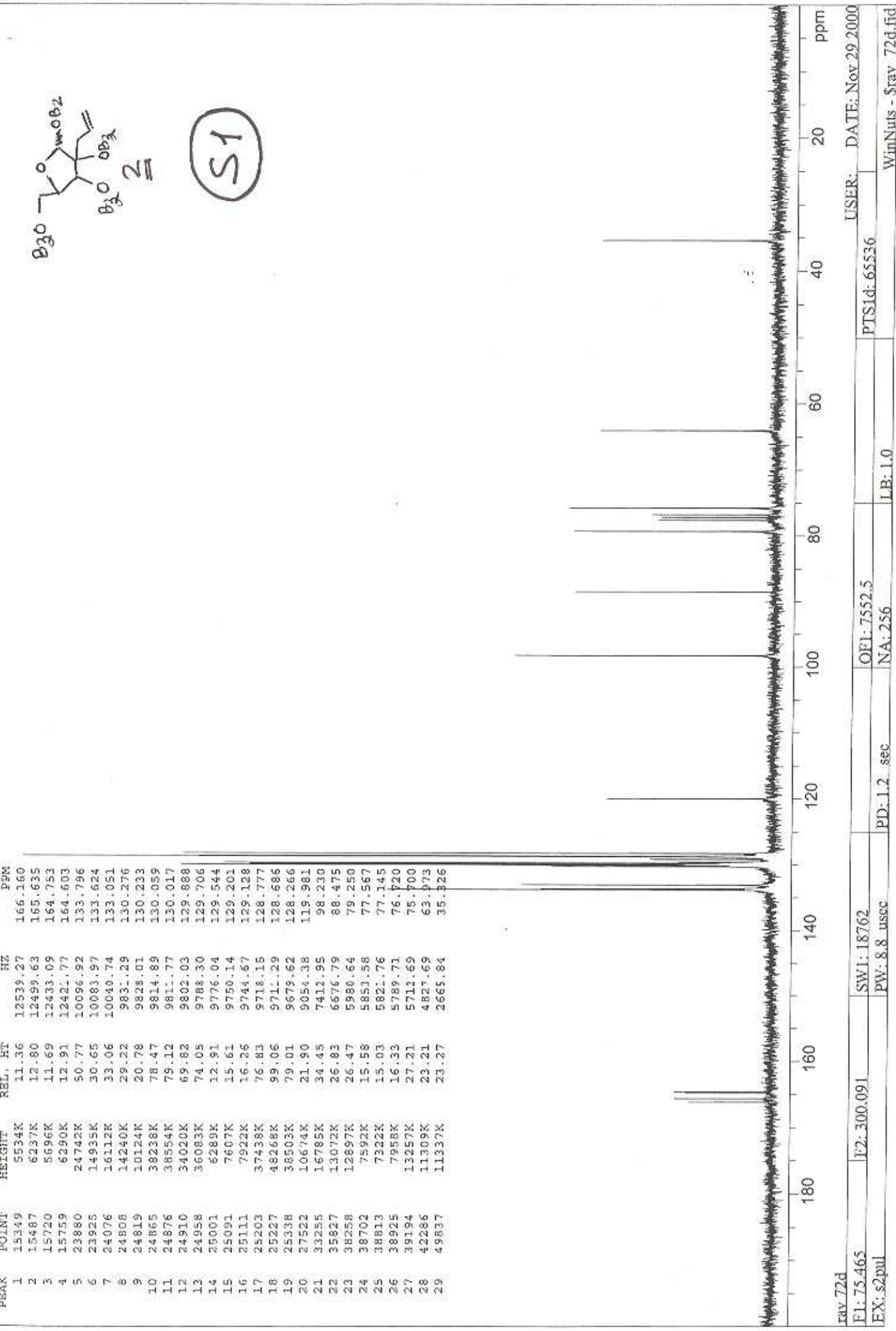


Interpolated Peak Listing

PBPK	POINT	HEIGHT	RBL, RT	HZ	PPM
1	15349	5534K	11.36	12539.27	166.160
2	15487	6237K	12.80	12499.63	165.635
3	15720	5696K	11.69	12433.09	164.753
4	15759	6290K	12.91	12421.77	164.603
5	23880	24742K	50.77	10096.92	133.796
6	23923	14935K	30.65	10083.97	133.624
7	24076	16112K	33.06	10040.74	133.051
8	24808	14240K	29.22	9831.29	130.276
9	24819	10124K	20.78	9828.01	130.233
10	24865	38238K	78.47	9814.89	130.059
11	24876	38554K	79.12	9811.77	130.017
12	24910	34020K	69.82	9802.03	129.888
13	24958	36083K	74.05	9788.30	129.706
14	25001	6289K	12.91	9776.04	129.544
15	25091	7607K	15.61	9750.14	129.201
16	25111	7922K	16.26	9744.67	129.128
17	25203	37438K	76.83	9718.15	128.777
18	25227	48268K	99.06	9711.29	128.686
19	25338	38503K	79.01	9679.62	128.266
20	27522	10674K	21.90	9054.38	119.981
21	33255	16785K	34.45	7412.95	98.230
22	35827	13072K	26.83	6676.79	88.475
23	38258	12897K	26.47	5980.64	79.250
24	38702	7592K	15.58	5851.58	77.567
25	38813	7322K	15.03	5821.76	77.145
26	38925	7958K	16.33	5789.71	76.720
27	39194	13257K	27.21	5712.69	75.700
28	42286	11309K	23.21	4827.69	63.973
29	49837	11337K	23.27	2665.84	35.326

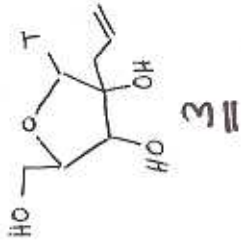


(S1)



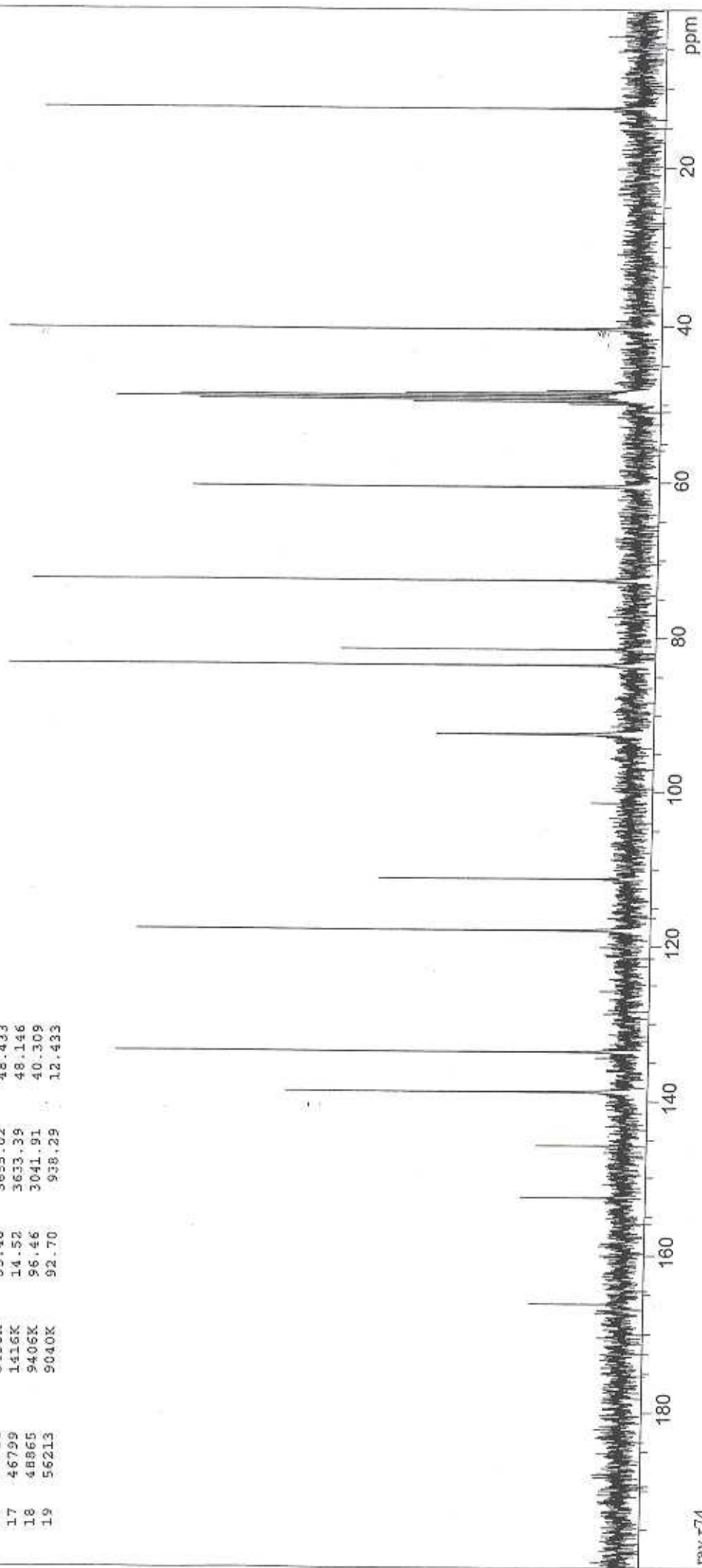
User: DATE: Nov 29 2000
 PTS1d: 65536
 LB: 1.0
 QF1: 7552.5
 NA: 256
 PD: 1.2 sec
 SW1: 18762
 PW: 8.8 usec
 F1: 75.465
 F2: 300.091
 EX: s2pul
 WinNuts - \$rav 72d.fid

S2

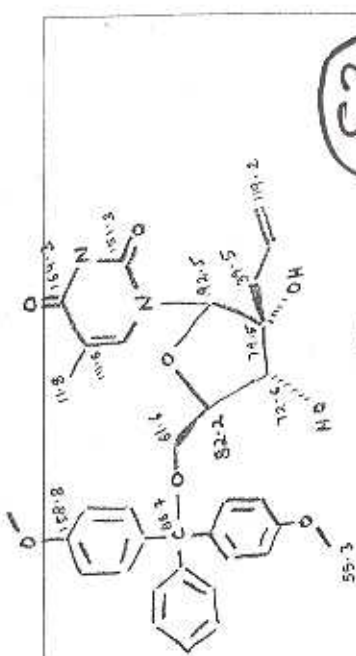


Interpolated Peak Listing

PEAK	POINT	HEIGHT	REL. HT	HZ	PPM
1	15678	1418K	14.54	12542.97	166.208
2	19265	1546K	15.85	11515.92	152.599
3	22905	5009K	51.36	10473.82	138.790
4	24264	7576K	77.69	10084.78	133.635
5	28407	7268K	74.53	8898.72	117.918
6	30173	3726K	36.21	8393.10	111.218
7	35120	2876K	29.49	6976.89	92.452
8	37481	9340K	95.78	6380.99	83.495
9	38024	4437K	45.50	6145.64	81.437
10	40363	8901K	91.27	5475.86	72.561
11	43539	6577K	67.44	4866.70	60.514
12	46425	3366K	34.52	3740.43	49.565
13	46499	6480K	66.45	3719.20	49.284
14	46574	7876K	80.76	3697.80	49.000
15	46649	6865K	70.40	3676.46	48.717
16	46724	3458K	35.46	3655.02	48.433
17	46799	1416K	14.52	3633.39	48.146
18	48865	9406K	96.46	3041.91	40.309
19	56213	9040K	92.70	938.29	12.433



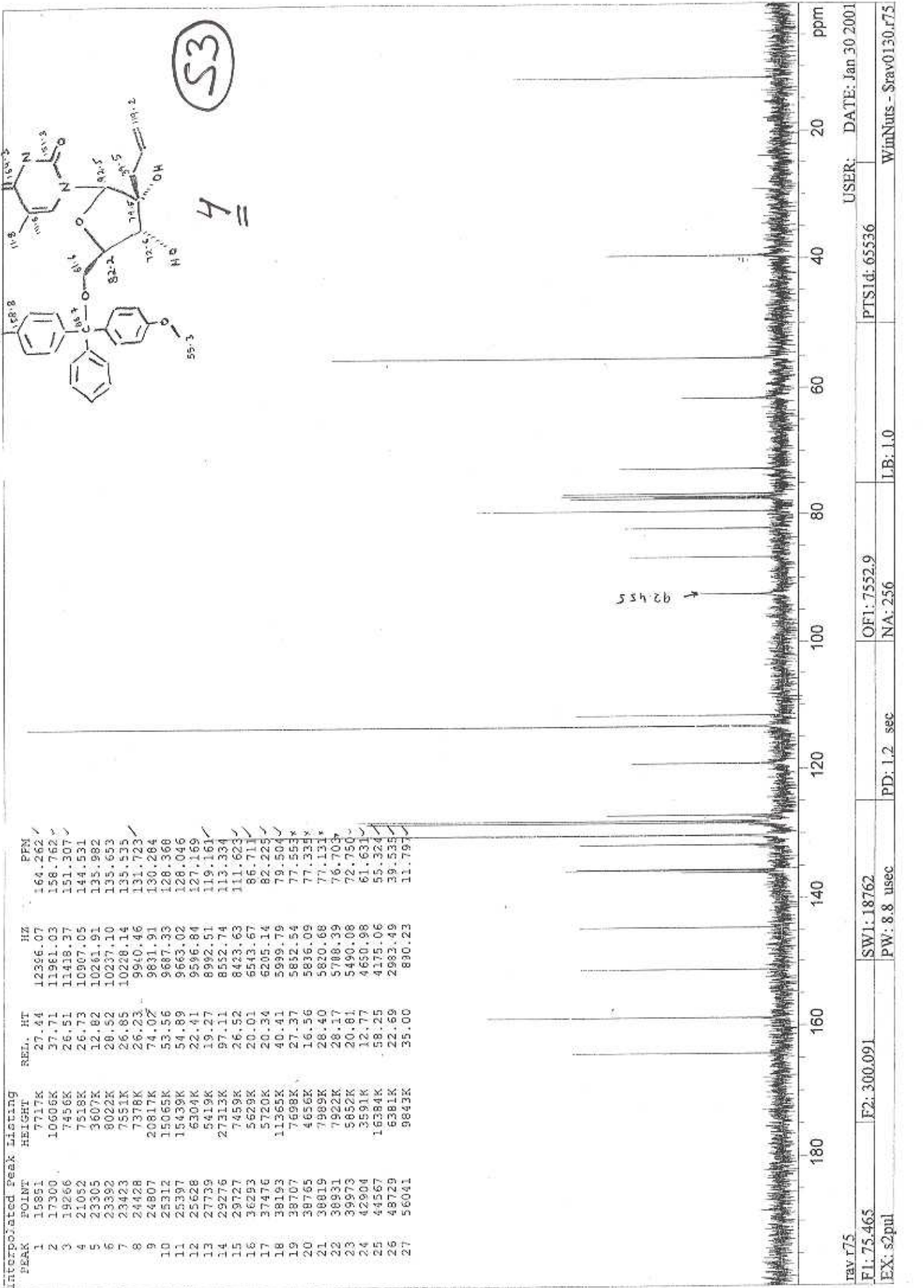
User: WimNuts - Srav_r74.fid
 DATE: Feb 12 2001
 USER: PTSid: 65536
 OPI: 7650.3
 NA: 256
 LB: 1.0
 PD: 1.2 sec
 SW1: 18762
 PW: 8.8 usec
 F2: 300.092
 EX: s2pul
 F1: 75.465
 rrv_r74



S3

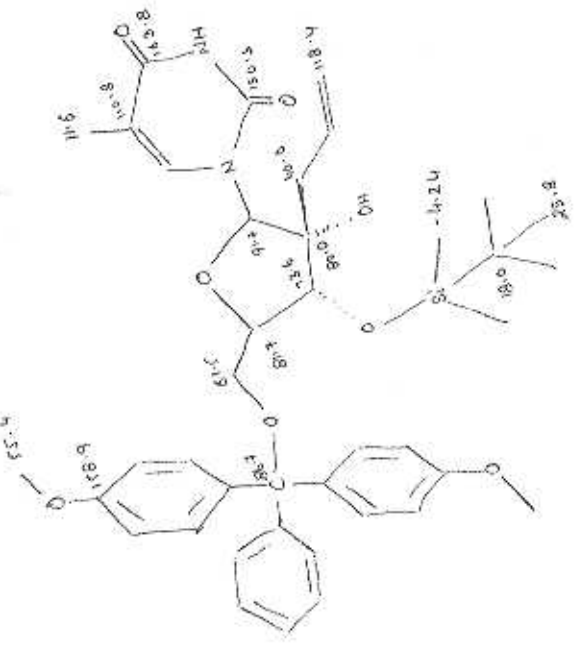
4 =

PEAK	POINT	HEIGHT	REL. HT	HZ	PPM
1	15951	7717K	27.44	12356.07	164.262
2	17300	10606K	37.71	11961.03	158.762
3	19266	7456K	26.51	11418.37	151.307
4	21052	7518K	26.73	10907.05	144.531
5	23305	3607K	12.82	10261.91	135.982
6	23392	8022K	28.52	10237.10	135.653
7	23423	7551K	26.85	10228.14	135.535
8	24428	7378K	26.23	9940.46	131.723
9	24807	20817K	74.07	9831.91	130.284
10	25312	15065K	53.56	9687.33	128.368
11	25397	15439K	54.89	9663.02	128.046
12	25628	6304K	22.41	9596.84	127.169
13	27739	5419K	19.27	8992.51	119.161
14	29276	27313K	97.11	8552.74	113.334
15	29727	7459K	26.52	8423.63	111.623
16	36293	5629K	20.01	6543.67	86.711
17	37476	5720K	20.34	6205.14	82.225
18	38193	11355K	40.41	5999.79	79.504
19	38707	7698K	27.37	5852.54	77.553
20	38765	4656K	16.56	5836.09	77.338
21	38819	7989K	28.40	5820.68	77.131
22	38931	7922K	28.17	5788.39	76.703
23	39973	5852K	20.81	5490.08	72.750
24	42804	3591K	12.77	4650.98	61.631
25	44567	16384K	58.25	4175.06	55.324
26	48729	6381K	22.69	2983.49	39.535
27	56041	9843K	35.00	830.23	11.797



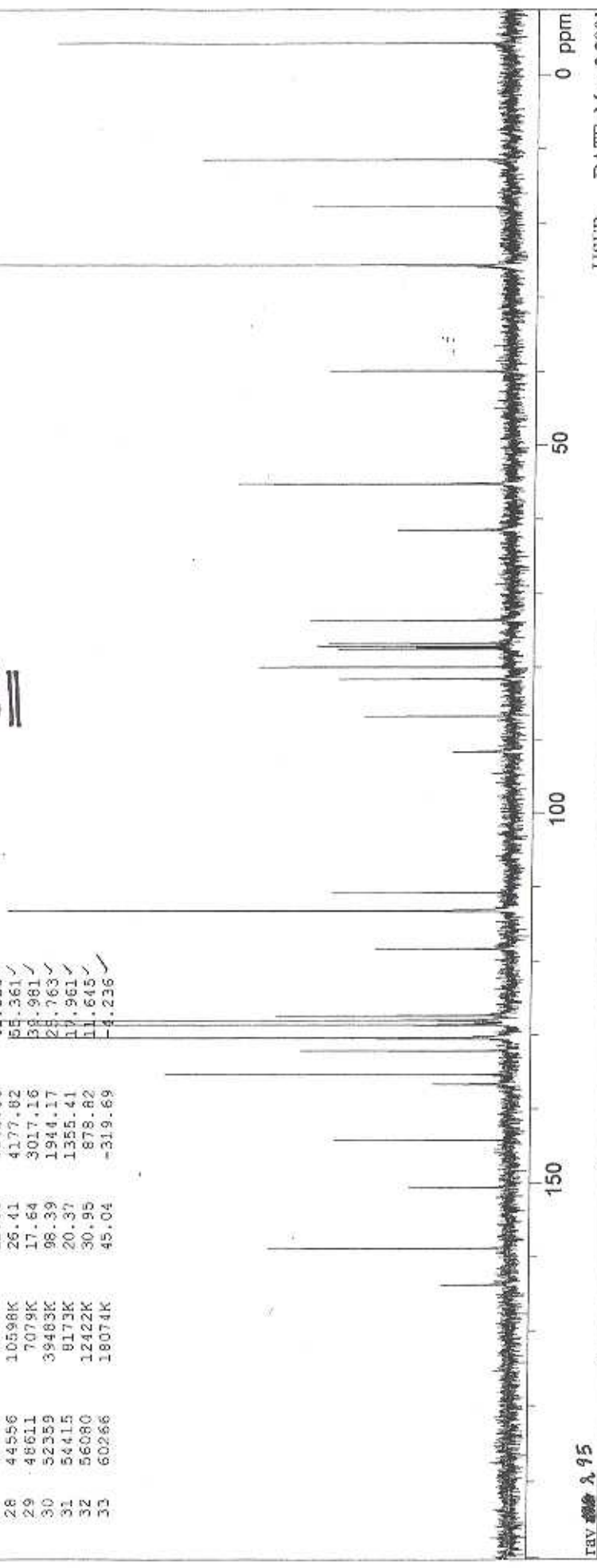
USER: DATE: Jan 30 2001
 PTS1d: 65536
 OF1: 7552.9
 NA: 256
 I.B: 1.0
 PD: 1.2 sec
 PW: 8.8 usec
 SW1: 18762
 F2: 300.091
 EX: s2pul
 WmNurs - Strav0130.r75

(S4)



5a

PEAK	POINT	HEIGHT	REL. HT	H2	PPM
1	15961	2508K	6.25	12364.32	163.842
2	17265	9209K	22.95	11991.10	158.896
3	19468	3791K	9.45	11360.15	150.535
4	21161	6912K	17.22	10875.52	144.113
5	23141	2658K	7.12	10308.66	136.602
6	23483	13658K	34.03	10210.90	135.306
7	24312	8117K	20.23	9973.47	132.160
8	24765	19699K	49.09	9843.79	130.442
9	24787	19530K	48.67	9837.86	130.359
10	25254	18675K	46.54	9703.76	128.586
11	25418	20010K	49.86	9656.89	127.965
12	25585	9156K	22.81	9609.11	127.392
13	27947	5158K	12.85	8932.87	118.371
14	29292	18667K	46.52	8547.77	113.268
15	29905	19622K	48.90	8544.08	113.219
16	29335	2122K	5.29	8535.64	113.107
17	29935	7107K	17.71	8363.68	110.828
18	34998	2187K	8.45	6917.16	91.660
19	36288	5665K	14.12	6545.10	86.730
20	37620	6666K	16.61	6163.72	81.676
21	38056	10060K	25.07	6038.73	80.020
22	38704	6703K	16.70	5853.37	77.564
23	38763	3673K	9.15	5836.33	77.398
24	38816	7563K	18.85	5821.31	77.139
25	38928	7085K	17.65	5789.10	76.712
26	39740	7866K	19.60	5556.65	73.032
27	42930	4412K	11.00	4643.38	61.530
28	44556	10598K	26.41	4177.82	55.361
29	48611	7079K	17.64	3017.16	38.981
30	52359	39483K	98.39	1944.17	28.763
31	54415	9173K	20.37	1355.41	17.961
32	56080	12422K	30.95	878.82	11.645
33	60266	18074K	45.04	-319.69	-4.236

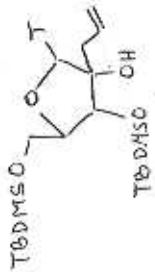


USER: DATE: May 2 2001
 PTSId: 65536
 OF1: 7552.7
 NA: 256
 PD: 1.2 sec
 SW1: 18762
 PW: 8.8 usec
 LB: 1.0
 EX: s2pul
 WmNuts - Grav0502.r98

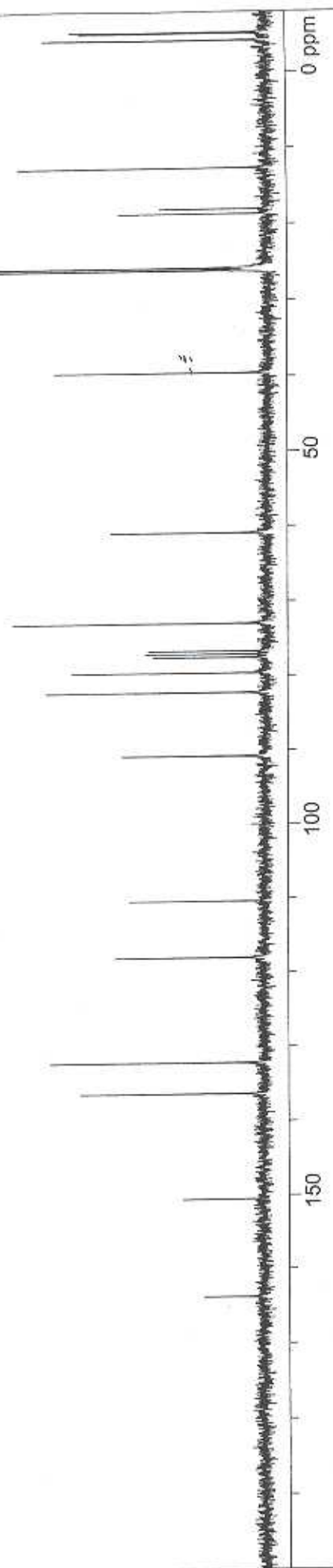
Interpolated Peak Listing

PEAK	POINT	HEIGHT	REL. HT	HZ	PPM
1	15987	3398K	6.24	12356.72	163.741
2	19475	4541K	8.33	11358.26	150.510
3	23210	9722K	17.94	10288.85	136.339
4	24311	11559K	21.21	9973.75	132.164
5	28036	7995K	14.67	8907.41	118.033
6	30041	7206K	13.23	8333.23	110.425
7	35210	7572K	13.90	6853.42	90.816
8	37466	11645K	21.37	6207.64	82.258
9	38159	10393K	19.07	6009.21	79.529
10	38709	5967K	10.95	5851.84	77.544
11	38821	6387K	11.72	5819.87	77.120
12	38933	6265K	11.50	5787.70	76.694
13	39908	13406K	24.60	5508.50	72.994
14	43099	8154K	14.97	4595.03	60.889
15	48712	11097K	20.37	2988.01	39.595
16	52261	52645K	96.62	1971.99	26.131
17	52292	2736K	5.02	1863.21	26.015
18	52347	53365K	101.61	1947.47	25.806
19	54235	7814K	14.34	1406.85	18.642
20	54397	5733K	10.52	1360.55	18.029
21	55805	13132K	24.10	957.56	12.689
22	60235	11631K	21.35	-310.81	-4.119
23	60248	11775K	21.61	-314.56	-4.168
24	60486	10037K	18.42	-382.64	-5.070
25	60526	10508K	15.28	-394.08	-5.222

S5



S5

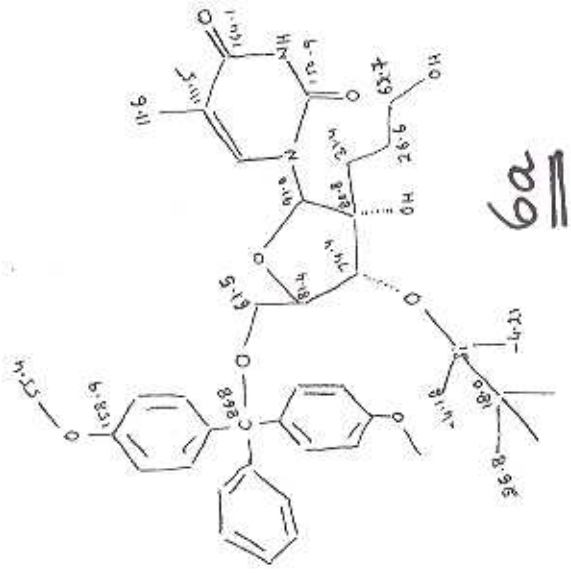


ray 111
F1: 75.465 F2: 300.091 SW1: 18762
PTSD: 65536 OFI: 7552.7
USER: DATE: Oct. 2 2001
WinnData \$=1002.111

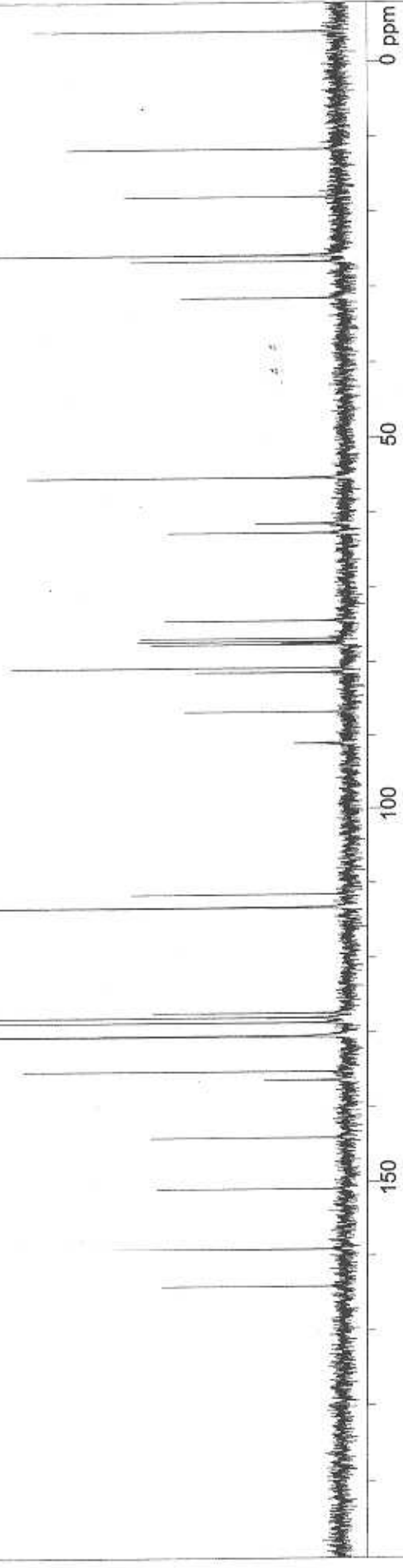
(56)

Interpolated Peak Listing

PEAK	POINT	HEIGHT	REL. HT	Hz	PPM
1	15903	12797K	17.48	12381.28	164.066 ✓
2	17265	19219K	26.25	11991.28	158.898 ✓
3	19381	13066K	17.84	11385.61	150.873 ✓
4	21174	13561K	18.52	10872.26	144.070 ✓
5	23190	5400K	7.37	10295.08	136.422 ✓
6	23492	21994K	30.04	10208.73	135.277 ✓
7	24754	28907K	39.48	9847.38	130.489 ✓
8	24776	28569K	39.02	9841.02	130.405 ✓
9	25243	27279K	37.26	9707.40	128.634 ✓
10	25417	28129K	38.42	9657.61	127.974 ✓
11	25580	13066K	17.84	9610.96	127.356 ✓
12	29293	28800K	39.33	8548.08	113.272 ✓
13	29305	30036K	41.02	8544.44	113.224 ✓
14	29762	14725K	20.11	8413.81	111.493 ✓
15	35151	3311K	4.52	6870.83	91.047 ✓
16	36276	11290K	15.42	6548.80	86.775 ✓
17	37698	10115K	13.81	6141.69	81.385 ✓
18	37864	23595K	32.22	6094.20	80.755 ✓
19	38703	13176K	17.99	5853.46	77.565 ✓
20	38764	4236K	5.79	5836.56	77.341 ✓
21	38817	14207K	19.40	5821.38	77.140 ✓
22	38928	13841K	18.90	5789.50	76.718 ✓
23	39553	12149K	16.59	5610.78	74.349 ✓
24	42620	11985K	16.37	4732.62	62.713 ✓
25	42946	5969K	8.15	4639.25	61.475 ✓
26	44557	21512K	29.38	4178.22	55.366 ✓
27	50862	11127K	15.20	2373.06	31.446 ✓
28	52152	14604K	19.94	2003.79	26.553 ✓
29	52358	73830K	100.83	1944.77	25.770 ✓
30	54413	14911K	20.36	1356.62	17.977 ✓
31	56097	19329K	26.40	874.32	11.586 ✓
32	60254	21682K	29.61	-315.73	-4.184 ✓
33	60261	19065K	26.04	-317.86	-4.212 ✓



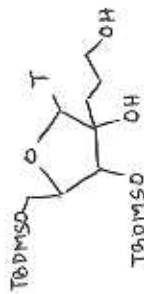
6a



rav r96
 F1: 75.465 F2: 300.091 SW1: 18762 PD: 1.2 sec OF1: 7553.1 LB: 1.0
 EX: s2pul PW: 8.8 usec NA: 256
 USER: DATE: Mar 28 2001
 PTS1d: 65536
 WinNuts - \$rav0328.r96

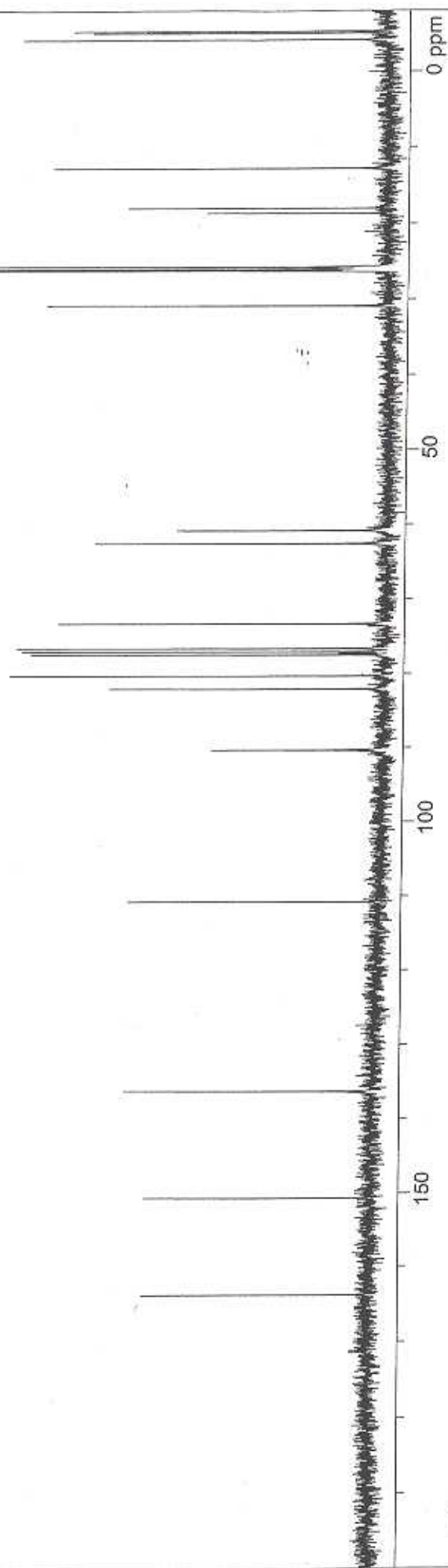
Interpolated Peak Listing

PEAK	POINT	HEIGHT	REL. HT	HZ	PPM
1	15958	33567K	16.75	12385.23	163.854
2	19432	32371K	16.15	11370.75	150.676
3	23210	35012K	17.47	10288.92	136.340
4	28919	35840K	17.78	8368.27	110.889
5	35323	23387K	11.67	6821.18	90.389
6	37501	37604K	18.76	6197.80	82.128
7	37966	52347K	26.11	6054.52	80.362
8	38714	47986K	23.94	5850.61	77.527
9	38826	49981K	24.93	5818.36	77.100
10	38937	50525K	25.21	5786.54	76.678
11	39802	44718K	22.31	5539.08	73.399
12	42640	39636K	15.77	4726.41	62.630
13	43100	28459K	14.20	4594.81	60.887
14	50983	47062K	23.48	2338.05	30.982
15	52204	55324K	27.70	1998.34	26.348
16	52253	204403K	101.97	1974.45	26.164
17	52341	200026K	99.79	1949.20	25.829
18	54212	25426K	12.68	1413.69	18.733
19	54389	36132K	18.03	1362.83	18.059
20	55764	46376K	23.14	969.37	12.845
21	60229	51095K	25.49	-309.05	-4.095
22	60236	51033K	25.46	-311.04	-4.122
23	60463	40229K	26.07	-375.81	-4.980
24	60532	44482K	22.19	-395.77	-5.244



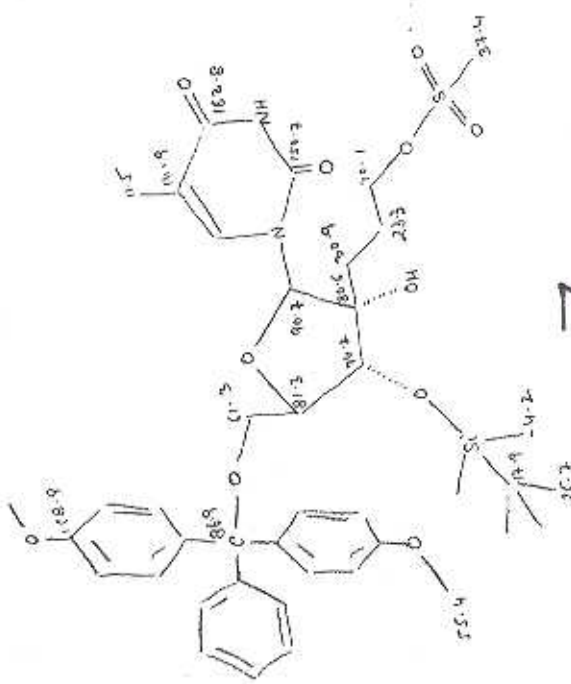
6b

(S7)



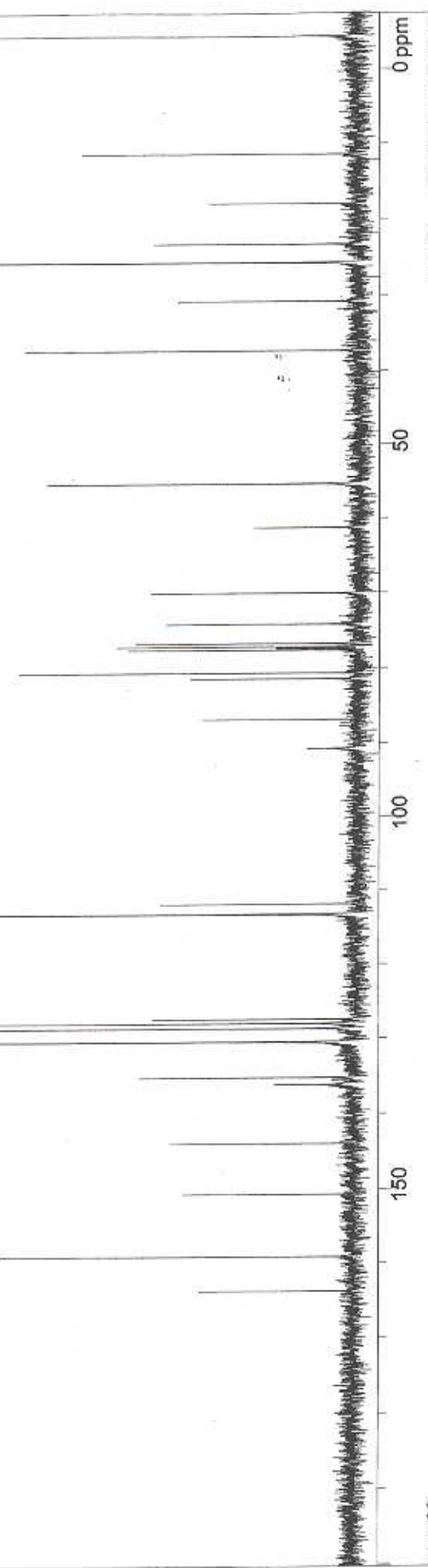
58

7a



Interpolated Peak Listing

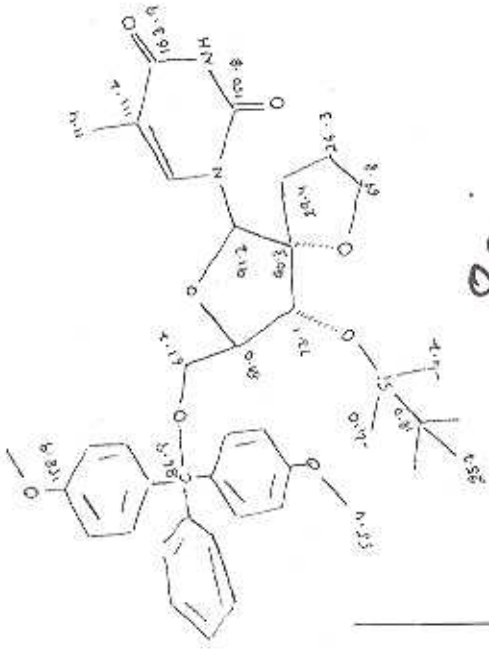
PEAK	POINT	HEIGHT	REL. HT	HZ	PPM
1	15974	5463K	14.97	12360.76	163.794
2	17250	13000K	35.61	11995.56	158.955
3	19427	6335K	17.36	11372.33	150.687
4	21217	6569K	18.00	10859.79	143.905
5	23273	2833K	7.76	10271.20	136.105
6	23513	7681K	21.04	10202.69	135.197
7	23520	7051K	19.32	10200.58	135.169
8	24728	2006K	5.50	9854.83	130.588
9	24762	19249K	52.73	9844.97	130.457
10	24771	16837K	46.12	9842.45	130.424
11	25233	14915K	40.86	9710.15	128.671
12	25408	14792K	40.52	9660.17	128.008
13	25558	7135K	9.55	9617.03	127.437
14	29287	17440K	47.77	8549.51	113.291
15	29296	16360K	44.82	8546.97	113.257
16	29659	7169K	9.64	8443.04	111.880
17	35232	1671K	4.58	6847.59	90.738
18	36249	5221K	5.12	6356.55	86.882
19	37709	5826K	5.96	6138.47	81.342
20	37915	12311K	33.73	6079.54	80.561
21	38705	8031K	22.00	5853.43	77.565
22	38764	2827K	7.75	5836.44	77.340
23	38817	8402K	23.02	5821.38	77.140
24	38938	7693K	21.08	5789.37	76.716
25	39396	6671K	18.27	5536.18	74.182
26	40674	7267K	19.91	5289.63	70.094
27	42988	3556K	9.74	4627.10	61.314
28	44552	10776K	29.52	4179.29	55.380
29	49281	11764K	32.23	2825.69	37.444
30	51012	6288K	17.25	2330.05	30.876
31	52354	36853K	100.98	1942.96	25.746
32	53002	7118K	19.50	1760.43	23.328
33	54419	5330K	14.60	1354.56	17.949
34	56123	9639K	26.46	866.95	11.488
35	60267	16265K	44.56	-319.48	-4.233



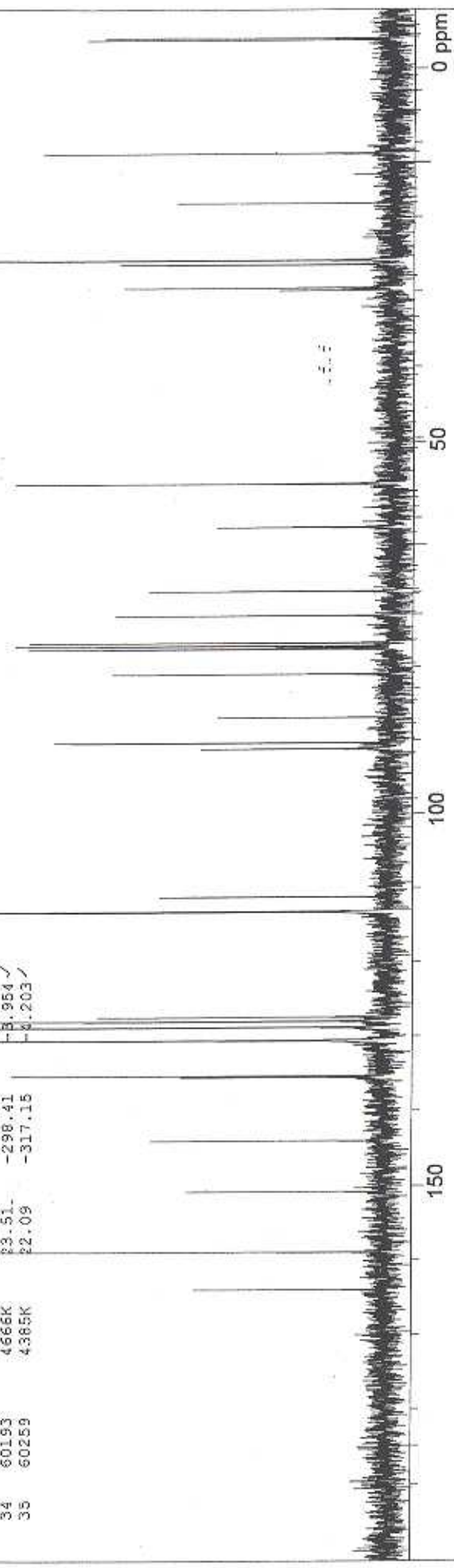
S9

Interpolated Peak Listing

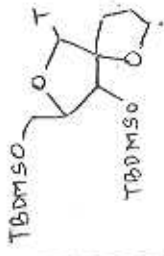
PEAK	POINT	HEIGHT	REL. HT	HZ	PPM
1	15931	3024K	15.24	12373.18	163.959
2	17258	6467K	32.58	11993.28	158.925
3	19411	3151K	15.87	11376.98	150.750
4	21198	3627K	18.27	10868.35	144.018
5	23436	3149K	15.87	10224.64	135.488
6	23487	5687K	28.65	10209.95	135.294
7	24727	10336K	52.07	9855.10	130.592
8	24743	9330K	47.01	9850.55	130.531
9	25201	8827K	44.47	9719.31	128.792
10	25423	9507K	47.90	9655.83	127.951
11	25571	4443K	22.38	9613.46	127.390
12	29300	9633K	48.53	8545.97	113.244
13	29312	9213K	46.41	8542.37	113.196
14	29339	714494	3.60	8534.86	113.097
15	29937	3585K	18.06	8392.12	111.205
16	35115	2837K	14.29	6881.03	91.182
17	35335	5204K	26.22	6818.20	90.349
18	36246	2663K	13.42	6557.27	86.891
19	37006	4160K	20.96	6110.61	80.973
20	38710	5496K	27.69	5851.94	77.545
21	38768	1730K	8.71	5835.24	77.324
22	38822	5699K	28.71	5819.87	77.120
23	38933	5492K	27.67	5786.07	76.699
24	39894	4138K	20.85	5512.86	73.062
25	40757	3669K	18.49	5265.88	69.779
26	43016	2604K	13.12	4619.19	61.210
27	44559	5808K	28.25	4177.33	57.355
28	51300	1687K	8.50	2247.48	28.782
29	51388	3995K	20.13	2222.29	28.448
30	52206	4087K	20.59	1988.26	28.347
31	52365	19311K	97.29	1942.85	28.745
32	54407	3311K	16.68	1358.16	17.997
33	56149	5362K	27.02	859.35	11.387
34	60193	4666K	23.51	-298.41	-8.954
35	60259	4365K	22.09	-317.15	-8.203



8a



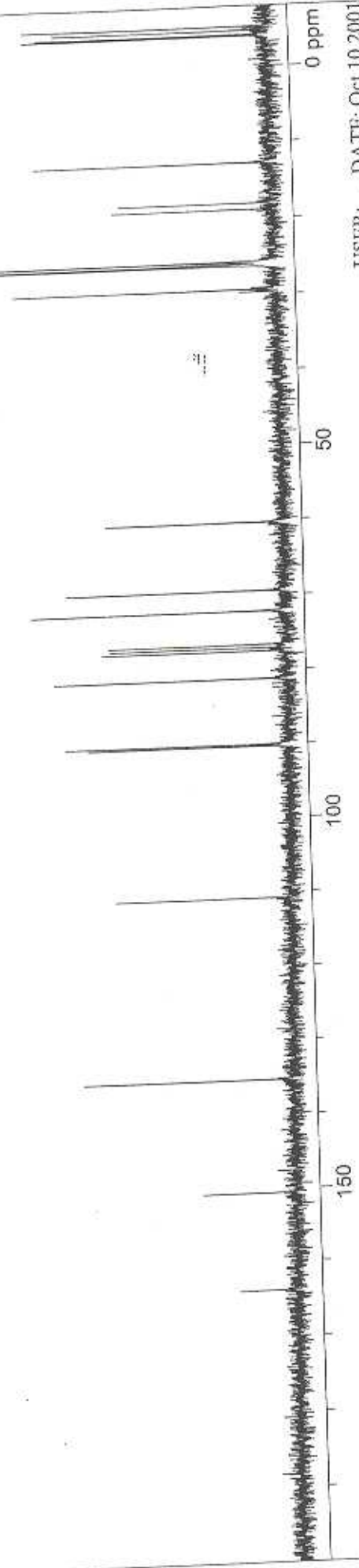
S10



8b

Interpolated Peak Listing

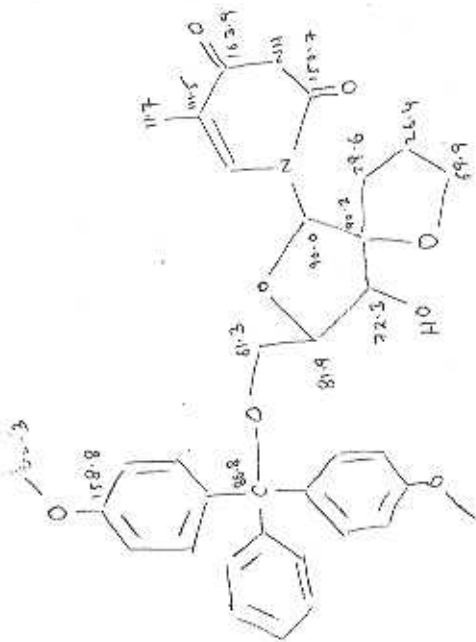
PEAK	POINT	HEIGHT	REL. HT	HZ	PPM
1	15938	2456K	5.89	12371.15	163.932
2	19449	3865K	9.23	11365.92	150.612
3	23450	8580K	20.48	10220.44	135.433
4	29918	7138K	17.04	8368.72	110.895
5	35324	8048K	19.21	6821.19	90.389
6	35392	9310K	22.22	6801.73	90.131
7	37732	9349K	22.32	6131.87	81.254
8	38713	7435K	17.75	5850.93	77.532
9	38824	7081K	16.90	5819.11	77.110
10	38936	7111K	16.97	5787.04	76.685
11	40116	10264K	24.50	5449.21	72.208
12	40839	8793K	20.39	5242.36	69.467
13	42234	7086K	16.92	4556.68	60.381
14	51394	10667K	25.46	2220.51	29.424
15	52215	41537K	99.15	1985.44	26.309
16	52343	13604K	32.47	1977.54	26.205
17	52338	42285K	100.93	1950.26	25.843
18	54156	6792K	16.21	1429.86	18.947
19	54377	6312K	15.07	1366.68	18.110
20	55773	9592K	22.90	966.81	12.811
21	60195	10021K	23.92	-299.13	-3.964
22	60241	9378K	22.38	-312.09	-4.136
23	60387	8879K	21.20	-353.96	-4.690
24	60528	9838K	23.48	-394.49	-5.227



USER: DATE: Oct 10 2001
 PTSId: 65536
 OFI: 7552.9
 SW1: 18762
 WmNuts - Srav1010.113

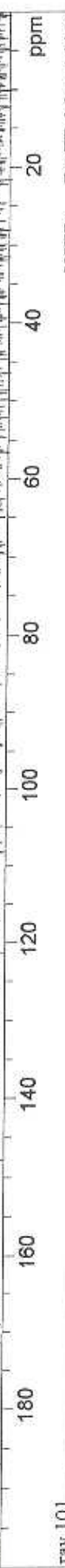
Interpolated Peak Listing

PEAK	POINT	HEIGHT	REL. HT	HG	PPM
1	15959	7051K	16.76	12369.34	163.855✓
2	17299	11768K	27.98	11981.55	158.769✓
3	19432	7876K	18.73	11371.00	150.679✓
4	21069	9077K	21.58	10902.26	144.468
5	23400	10263K	24.40	10235.18	135.628
6	23442	10967K	26.07	10223.01	135.467
7	23475	6005K	14.28	10213.55	135.341
8	24803	31178K	74.13	9833.51	130.305
9	24811	29341K	69.76	9831.13	130.274
10	25310	25969K	61.74	9688.27	128.381
11	25353	2286K	5.44	9676.08	128.219
12	25397	26150K	62.17	9663.23	128.049
13	25629	12210K	29.03	9596.84	127.169
14	29277	40835K	97.09	8552.49	113.330
15	29763	10461K	24.87	8413.40	111.487✓
16	35379	4570K	10.85	6805.74	90.184✓
17	35415	14683K	34.91	6795.24	90.045✓
18	36278	5057K	21.53	6548.23	86.772✓
19	37555	10020K	23.82	6182.68	81.928✓
20	38710	14114K	33.56	5852.01	77.546x
21	38769	7914K	18.82	5835.04	77.321x
22	38822	14691K	34.93	5819.87	77.120x
23	38933	14348K	34.11	5788.07	76.899x
24	40092	9213K	21.90	5456.42	72.304✓
25	40735	9096K	21.63	5272.19	69.863✓
26	42990	6538K	15.54	4626.74	61.310✓
27	44570	15748K	37.44	4174.33	55.115✓
28	51349	10269K	24.42	2233.54	29.897✓
29	52190	12340K	29.34	1983.00	26.410✓
30	56059	14853K	35.31	985.25	11.731✓

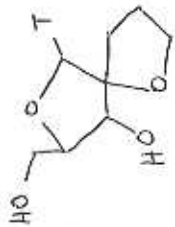


9a

S11



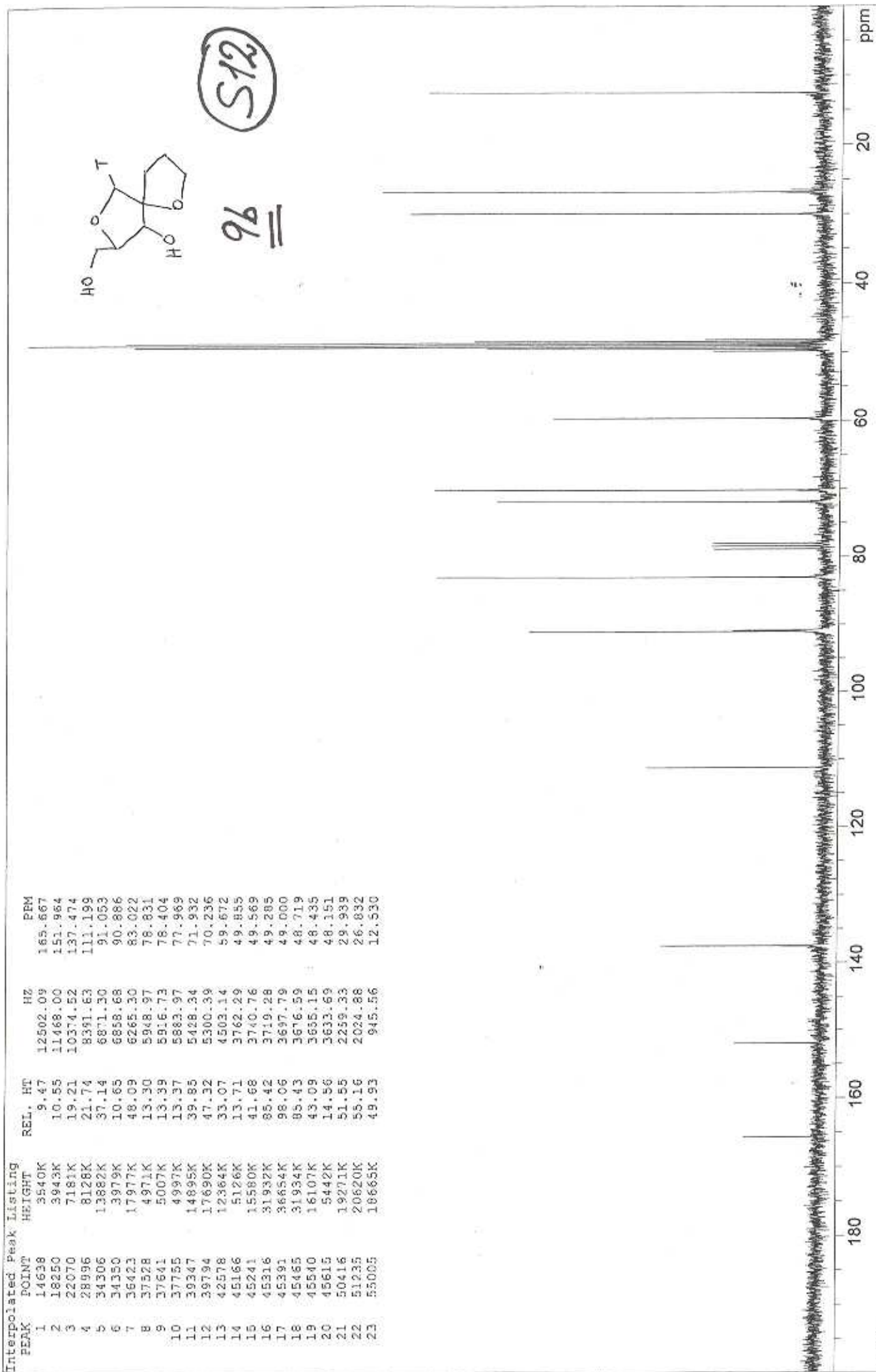
Trav 101	USER: DATE: May 4 2001
F1: 75.465	PTSId: 65536
F2: 300.091	OF1: 7553.1
EX: s2pul	NA: 256
	LB: 1.0
	PD: 1.2 sec
	PW: 8.8 usec
	SWI: 18762



S12

96

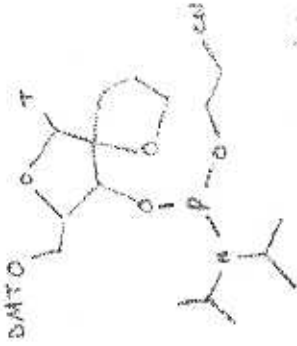
PEAK	POINT	HEIGHT	REL. HT	HZ	PPM
1	14638	3540K	9.47	12502.09	165.667
2	18250	3943K	10.55	11468.00	151.964
3	22070	7181K	19.21	10374.52	137.474
4	28996	8128K	21.74	8381.63	111.199
5	34306	13882K	37.14	6871.30	91.053
6	34350	3979K	10.65	6858.68	90.886
7	36423	17977K	48.09	6285.30	83.022
8	37528	4971K	13.30	5948.97	78.831
9	37641	5007K	13.39	5916.73	78.404
10	37755	4937K	13.37	5883.97	77.969
11	39347	14895K	39.85	5428.34	71.932
12	39794	17690K	47.32	5300.39	70.236
13	42578	12364K	33.07	4503.14	59.672
14	45166	5126K	13.71	3762.29	49.855
15	45241	15580K	41.68	3740.76	49.569
16	45316	31932K	85.42	3719.28	49.285
17	45391	36654K	98.06	3697.79	49.000
18	45485	31934K	85.43	3676.59	48.719
19	45540	16107K	43.09	3655.15	48.435
20	45615	5442K	14.56	3633.69	48.151
21	50416	19271K	51.55	2259.33	29.939
22	51235	20620K	55.16	2024.88	26.832
23	53005	18665K	49.93	945.56	12.530



R 108
 F1: 75.465 F2: 300.091 SW1: 18762 OF1: 7311.7
 EX: s2pul PD: 1.2 sec NA: 680 LB: 1.0
 USER: DAJE: Nov 1 2001
 PTS1d: 65536
 WmNuts - Strav1101.fid

Interpolated Peak Listing

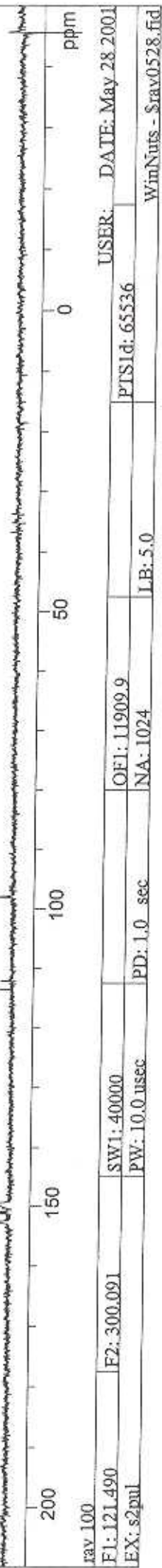
PEAK	POINT	HEIGHT	REL. HT	HZ	PPM
1	12195	4208K	2.51	24466.59	201.387
2	21903	36222K	21.63	18541.24	152.615
3	22183	4355K	2.60	18370.34	151.208
4	22492	158046K	94.39	18181.95	149.658
5	32769	20691K	12.36	11909.44	98.028
6	61346	-10758108	-6.43	-5533.05	-45.543



S13

10

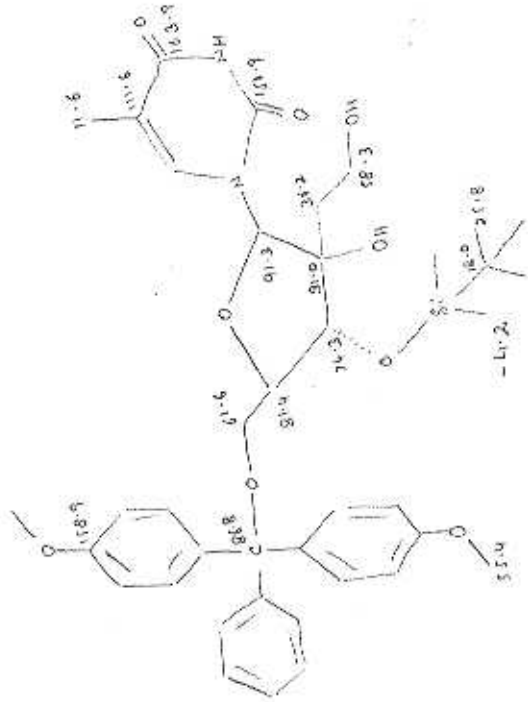
instrument



raw 100

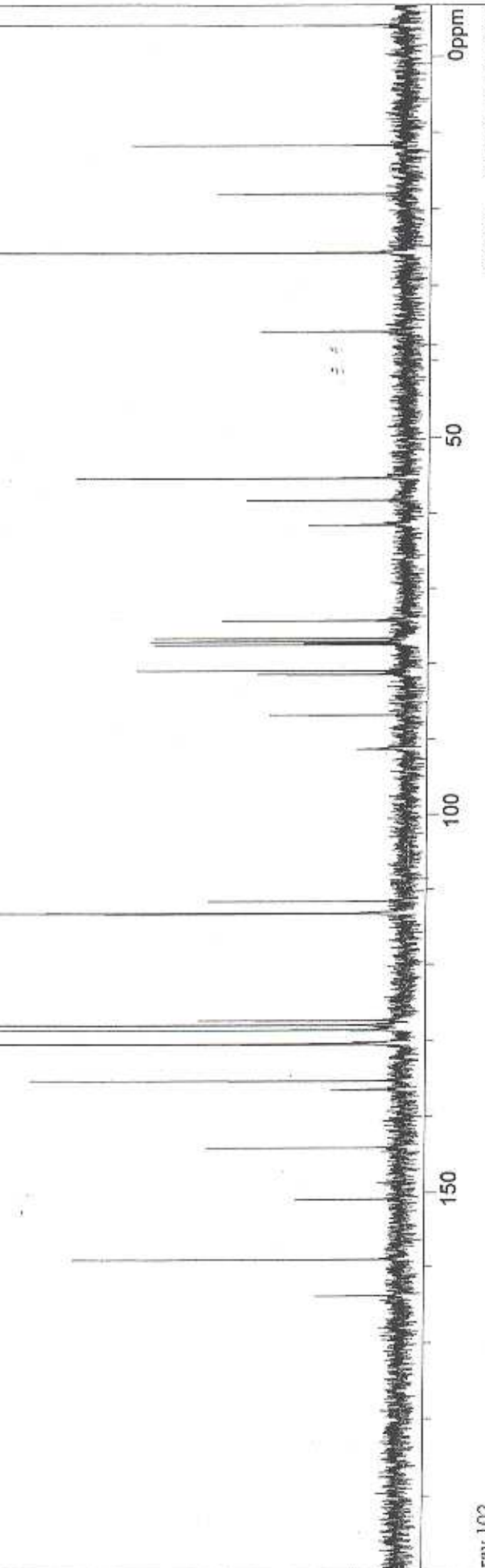
F1: 121.490 F2: 300.091 SW1: 40000 OF1: 11909.9 USER: DATE: May 28, 2001
 EX: s2pul PD: 1.0 sec PW: 10.0 usec NA: 1024 PTS1d: 65536 LB: 5.0 WinNuts - \$rav0528.fid

S14



11a

FRAC	POINT	HIGHT	REL. HT	HZ	PPM
1	15943	2623K	7.99	12369.43	163.909
2	17266	10227K	31.16	11990.71	158.891
3	19378	3255K	9.91	11386.00	150.878
4	21178	6140K	18.71	10870.75	144.050
5	23189	2161K	6.58	10294.91	136.419
6	23492	11589K	35.31	10208.18	135.270
7	24763	13747K	41.88	9844.30	130.448
8	24782	13883K	42.30	9838.86	130.376
9	24839	1474K	4.49	9822.54	130.160
10	25249	12740K	38.81	9705.23	128.606
11	25418	13437K	40.94	9656.86	127.965
12	25581	6240K	19.01	9610.15	127.346
13	29294	13527K	41.21	8547.21	113.260
14	29305	14538K	44.29	8544.11	113.219
15	29733	6101K	18.59	8421.55	111.595
16	35082	1399K	4.26	6890.31	91.305
17	36271	4254K	12.96	6549.83	86.793
18	37682	4440K	13.53	6145.74	81.438
19	37807	8145K	24.81	6109.97	80.964
20	38708	7619K	23.21	5852.08	77.547
21	38766	3035K	9.23	5835.69	77.330
22	38819	7755K	23.63	5820.30	77.126
23	38931	7547K	22.99	5788.46	76.704
24	39564	5556K	16.93	5607.03	74.300
25	42917	2917K	8.89	4647.09	61.579
26	43785	4841K	14.75	4398.59	58.286
27	44558	10041K	30.59	4177.40	55.355
28	49609	4399K	13.40	2731.25	36.192
29	52355	32412K	98.74	1945.11	25.775
30	54410	5796K	17.66	1356.77	17.979
31	56083	8481K	25.84	877.85	11.633
32	60265	15812K	48.17	-319.33	-4.231

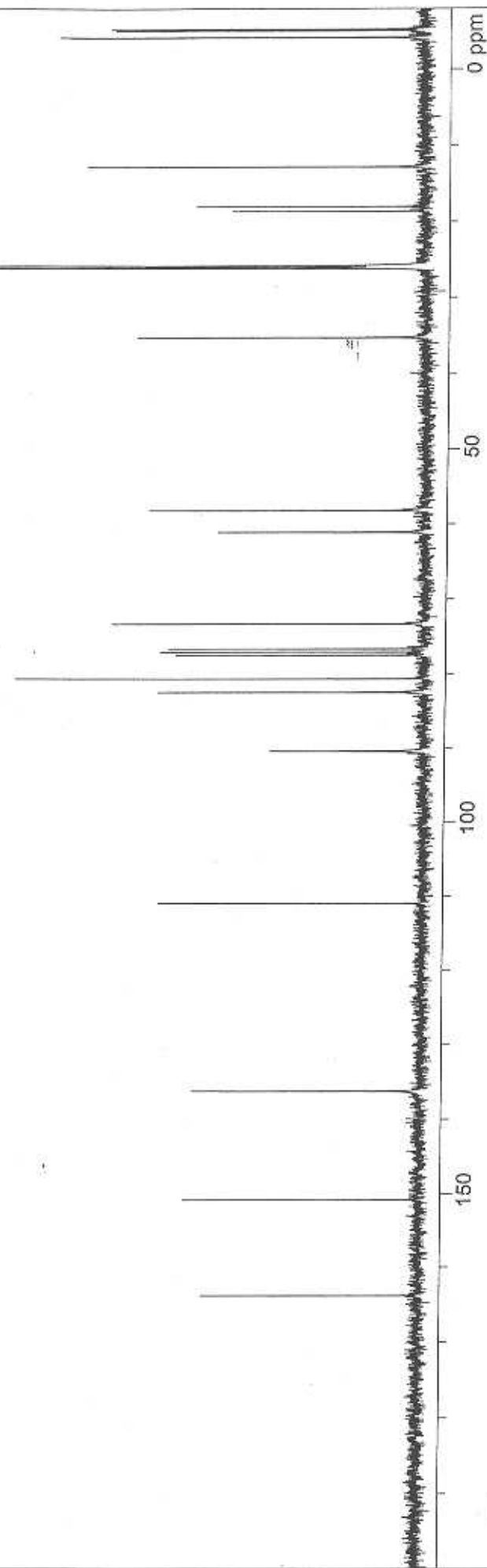
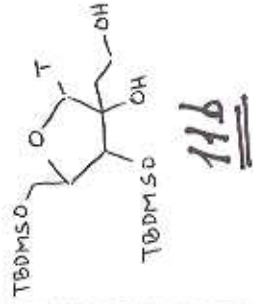


ray 102
 F1: 75.465 F2: 300.091 SW1: 18762
 EX: s2pul PW: 8.8 usec PID: 1.2 sec OF1: 7552.7 NA: 256 LB: 1.0
 USER: DATE: Apr 27 2001
 PTSId: 65536
 WimNuts - \$ray0427.102

Interpolated Peak Listing

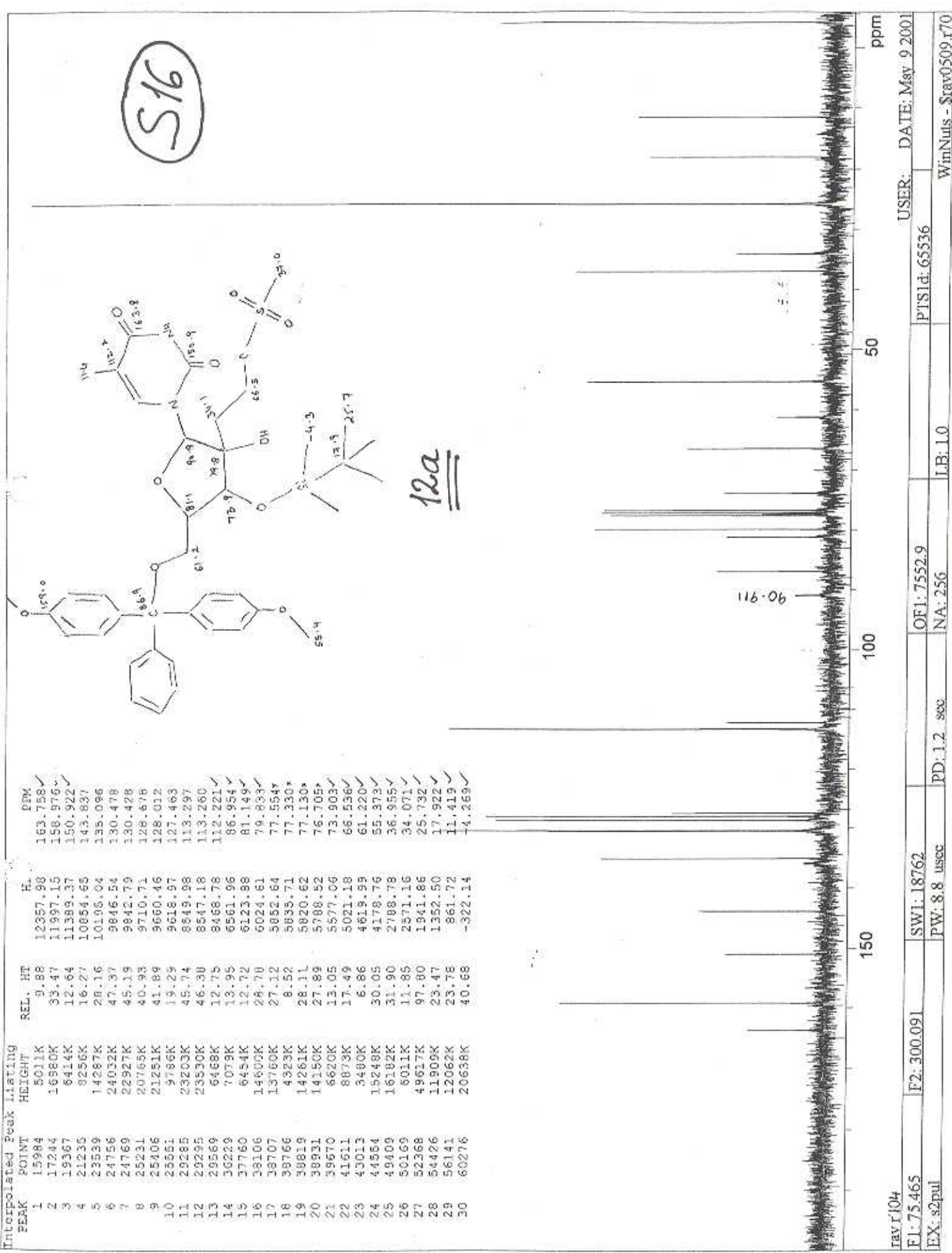
PEAK	POINT	HEIGHT	REL. HT	HZ	PPM
1	15970	41453K	15.23	12361.96	163.810
2	19401	45328K	16.65	11379.85	150.796
3	23227	42493K	15.61	10264.47	136.281
4	29895	49205K	18.07	8375.65	110.987
5	35301	28443K	10.45	6827.92	90.478
6	37400	49003K	18.00	6227.10	82.516
7	37877	78727K	28.92	6090.44	80.705
8	38713	46254K	16.99	5850.98	77.532
9	38825	48847K	17.94	5819.11	77.110
10	38937	47577K	17.47	5786.86	76.683
11	39813	58634K	21.54	5536.17	73.361
12	43036	38435K	14.12	4613.47	61.134
13	43796	51463K	18.90	4395.91	58.251
14	49855	53818K	19.77	2661.17	35.264
15	52254	276423K	100.79	1971.56	26.125
16	52341	276313K	101.49	1949.60	25.834
17	54224	37621K	13.82	1410.41	18.690
18	54386	43059K	15.82	1363.98	18.074
19	55759	64368K	23.64	968.13	12.829
20	60237	67822K	24.91	-311.05	-4.122
21	60253	70034K	25.72	-315.46	-4.180
22	60482	59710K	21.93	-381.09	-5.050
23	60535	58825K	21.61	-396.40	-5.253

S15



raw 114
 USER: DATE: Oct 27 2001
 F1: 75.465 F2: 300.091 OF1: 7553.0
 EX: s2pul PD: 1.2 sec NA: 1024 LB: 1.0
 PTSId: 65536
 WinNmr - Sav1077 114

S16



Interpolated Peak Listing

PEAK	POINT	HEIGHT	REL. HT	R.	PPM
1	15984	5011K	9.88	12357.90	163.758✓
2	17244	16980K	33.47	11997.15	158.976✓
3	19367	6414K	12.64	11389.37	150.922✓
4	21235	9256K	16.27	10854.65	143.837✓
5	23539	14287K	28.16	10195.04	135.096✓
6	24756	24032K	47.37	9846.54	130.478✓
7	24769	22927K	45.19	9842.79	130.428✓
8	25231	20765K	40.93	9710.71	128.678✓
9	25406	21251K	41.89	9660.46	128.012✓
10	25551	9786K	19.29	9618.97	127.463✓
11	29285	23203K	45.74	8549.98	113.297✓
12	29295	23530K	46.30	8547.18	113.260✓
13	29569	6468K	12.75	8468.78	112.221✓
14	36229	7079K	13.95	6561.96	86.954✓
15	37760	6454K	12.72	6123.98	81.149✓
16	38106	14600K	28.70	6024.61	79.833✓
17	38707	13760K	27.12	5852.64	77.554✓
18	38766	4323K	8.52	5835.71	77.330*
19	39819	14261K	28.11	5820.62	77.130*
20	39931	14150K	27.89	5788.52	76.705*
21	39670	6620K	13.05	5577.06	73.903✓
22	41611	8873K	17.49	5021.18	66.536✓
23	43013	3400K	6.86	4619.99	61.220✓
24	44564	15248K	30.05	4178.76	55.373✓
25	49409	16182K	31.90	2788.78	36.955✓
26	50169	8011K	11.85	2571.16	34.071✓
27	52368	49617K	97.80	1941.86	25.732✓
28	54426	11909K	23.47	1352.50	17.922✓
29	56141	12062K	23.78	861.72	11.419✓
30	60276	20638K	40.68	-322.14	14.269✓

ppm

150

100

50

116.06

12a

USER: DATE: May 9 2001

PtSid: 65536

OF1: 7552.9

NA: 256

PD: 1.2 sec

PW: 8.8 usec

SW1: 18762

F2: 300.091

EX: s2pul

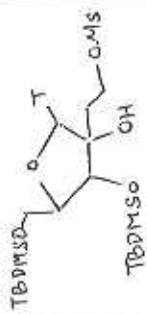
LAB: L0

WinNuts - \$rav0509.r70

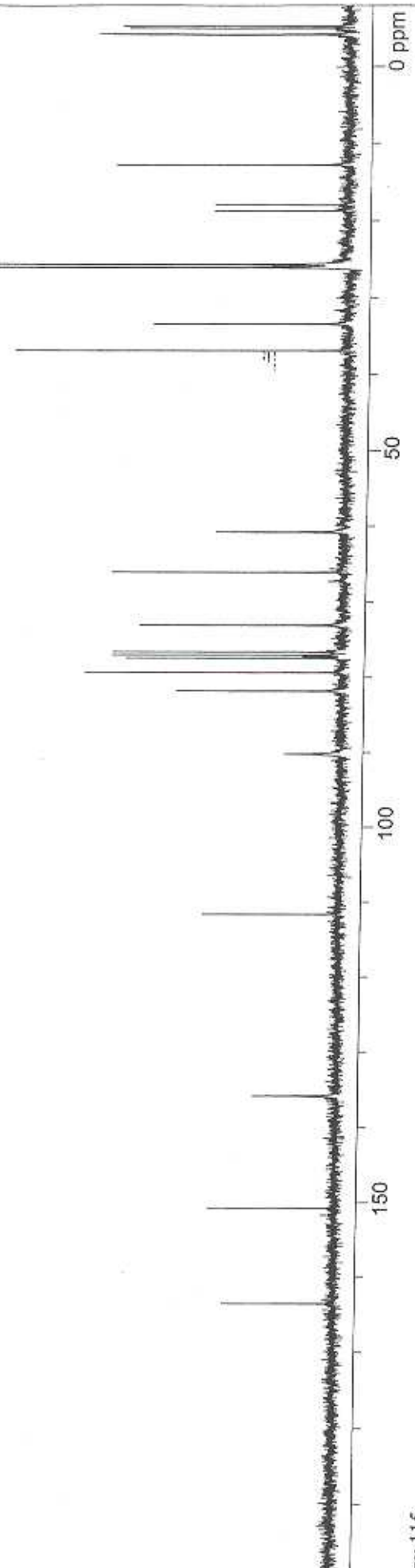
Interpolated Peak Listing

PEAK	POINT	HEIGHT	REL. HT	HZ	PPM
1	16018	23036K	10.89	12347.67	163.621
2	19410	26139K	12.36	11376.57	150.753
3	23336	16892K	7.98	10252.65	135.859
4	29715	28102K	13.29	8426.40	111.660
5	35357	11314K	5.35	6811.16	90.256
6	37563	33577K	15.87	6179.75	81.889
7	38213	53423K	25.26	5993.58	79.422
8	38712	43428K	20.53	5850.64	77.528
9	38823	46518K	21.99	5819.11	77.110
10	38935	46705K	22.08	5786.89	76.683
11	39876	41207K	19.48	5517.44	73.112
12	41720	46930K	22.19	4989.53	66.117
13	43121	25925K	12.26	4588.55	60.804
14	49400	68442K	32.36	2790.97	36.984
15	50310	38811K	18.35	2530.30	33.529
16	52246	20995K	99.28	1976.08	26.185
17	52280	15399K	7.28	1966.48	26.058
18	52351	213435K	100.91	1946.19	25.789
19	54202	28159K	13.31	1416.18	18.766
20	54400	27999K	13.24	1359.56	18.016
21	55758	47506K	22.46	970.66	12.862
22	60231	48381K	22.87	-309.90	-4.107
23	60249	51811K	24.50	-315.01	-4.174
24	60449	45712K	21.61	-372.22	-4.932
25	60531	45716K	21.61	-395.54	-5.241

S17



126

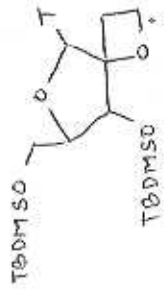


ray 115
 F1: 75.465 F2: 300.091 SW1: 18762
 EX: s2pul PD: 1.2 sec NA: 1024 OF1: 7552.5 I.R: 1.0
 USER: DATE: Oct 30 2001
 PTSId: 65536

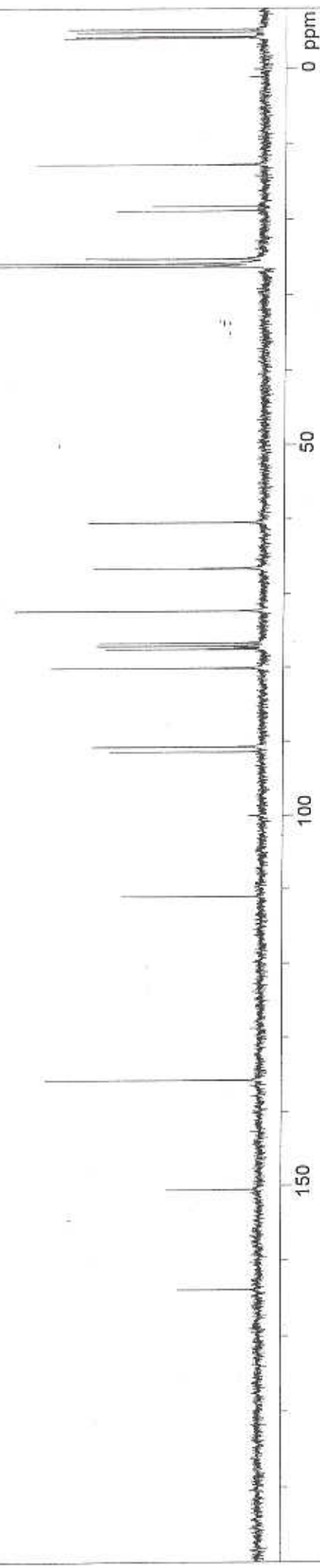
Interpolated Peak Listing

PEAK	POINT	HEIGHT	REL. HT	HZ	PPM
1	15953	8108K	9.84	12366.41	163.869
2	19454	9381K	10.23	11364.16	150.588
3	23377	21471K	23.40	10241.09	135.706
4	29894	14013K	15.27	8375.32	110.983
5	35044	15265K	16.64	6901.13	91.448
6	35225	16798K	18.31	6849.33	90.762
7	38027	20875K	22.75	6047.21	80.133
8	38714	15428K	16.82	5850.27	77.523
9	38772	2793K	3.04	5813.67	77.303
10	38826	16491K	17.98	5818.36	77.100
11	38938	16183K	17.64	5785.19	76.674
12	40070	24770K	27.00	5462.26	72.381
13	41576	16663K	18.16	5030.92	66.655
14	43203	17297K	18.85	4565.16	60.494
15	51305	2946K	3.21	2245.78	29.759
16	52236	92207K	100.50	1919.24	26.227
17	52341	91789K	100.05	1949.08	25.828
18	52511	17702K	19.29	1900.39	25.182
19	54188	14594K	15.91	1420.54	18.824
20	54357	11230K	12.24	1372.10	18.182
21	55801	22877K	24.94	988.64	12.703
22	60222	19808K	21.59	-306.89	-4.067
23	60276	19136K	20.86	-322.53	-4.274
24	60429	18801K	20.49	-366.37	-4.855
25	60530	19364K	21.76	-395.23	-5.237

S19



136



ray 116

F1: 75.465 F2: 300.091 SW1: 18762 PD: 1.2 sec

EX: s2pul

PTS1d: 65536 LB: 1.0

USER: DATE: Dec 18 2001

WinNuts - \$ray1218.116

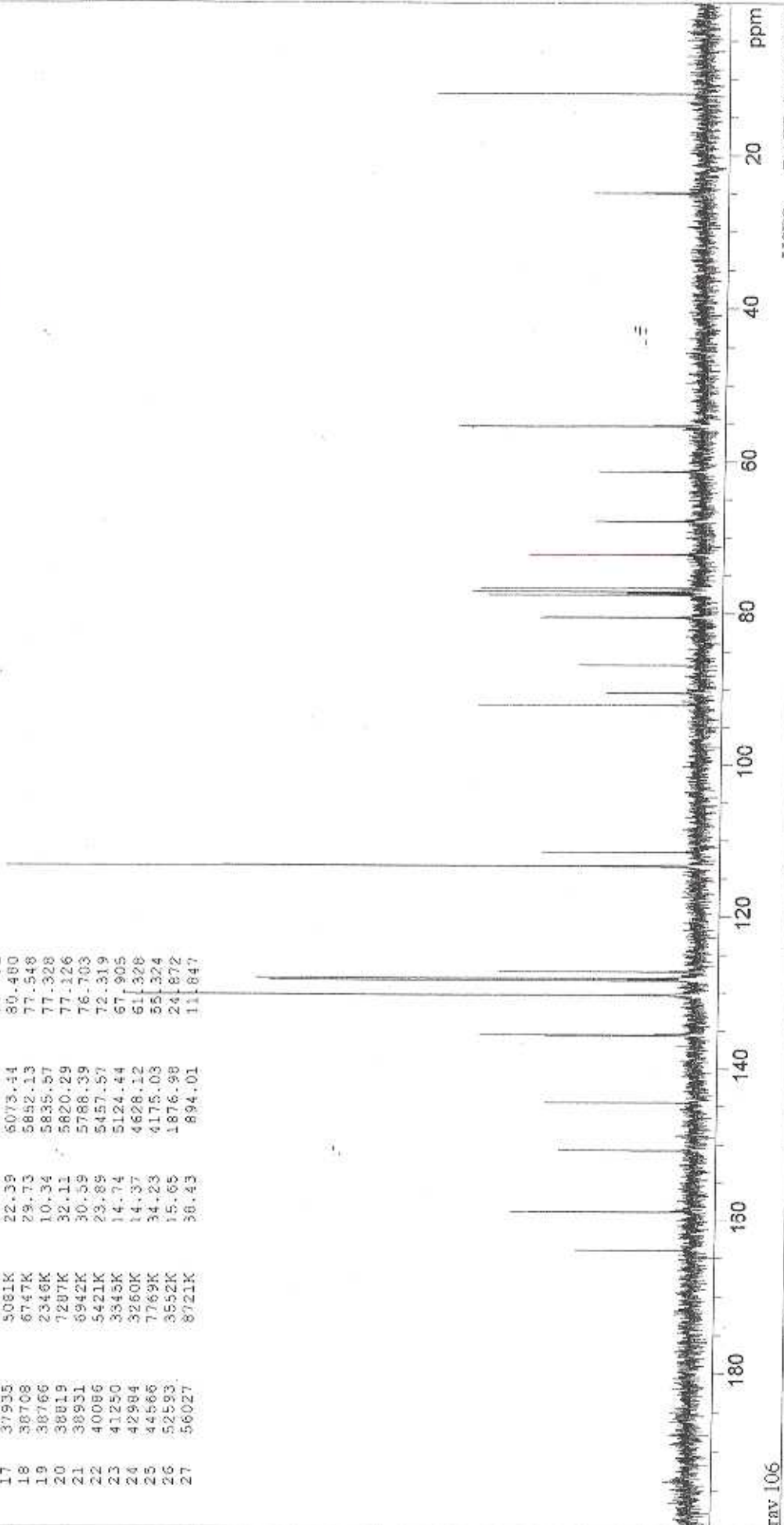
Interpolated Peak Listings

PEAK	POINT	HEIGHT	REL. HT	Hz	PPM
1	15936	3807K	16.78	12371.40	163.935
2	17299	5726K	25.23	11901.10	158.763
3	19412	4390K	19.34	11376.32	150.749
4	21072	4805K	21.17	10901.18	144.453
5	23408	4936K	21.75	10232.84	135.597
6	23441	6829K	30.09	10222.99	135.466
7	24812	13050K	79.58	9830.48	131.265
8	24817	17211K	75.84	9828.93	130.243
9	25320	13638K	60.10	9684.99	128.337
10	25396	14082K	62.05	9663.12	128.047
11	25629	6272K	27.64	9396.39	127.163
12	29275	21979K	96.85	8552.67	113.333
13	29754	4923K	21.59	8415.43	111.514
14	34074	7210K	31.77	6949.69	92.091
15	35297	2934K	12.93	6828.76	90.409
16	36271	3913K	17.24	6549.73	86.792
17	37935	5081K	22.39	6073.44	80.480
18	38708	6747K	29.73	5852.13	77.548
19	38760	2346K	10.34	5835.97	77.328
20	38819	7207K	32.11	5820.29	77.126
21	38931	6942K	30.59	5788.39	76.703
22	40086	5421K	23.89	5457.57	72.319
23	41250	3345K	14.74	5124.44	67.905
24	42984	3260K	14.37	4628.12	61.328
25	44586	7769K	34.23	4175.03	55.324
26	52593	3552K	15.65	1876.98	24.872
27	56027	8721K	38.43	894.01	11.847



14a

S20



RAW 106

F1: 75.465

F2: 300.091

SW1: 18762

OF1: 7552.7

IB: 1.0

USER: DATE: Jun 19 2001

EX: s2pul

PW: 8.8 usec

PD: 1.2 sec

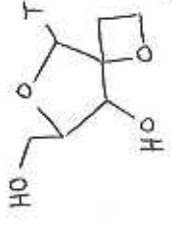
NA: 256

IB: 1.0

PTS1d: 65536

WinNuts - \$rav0619.106

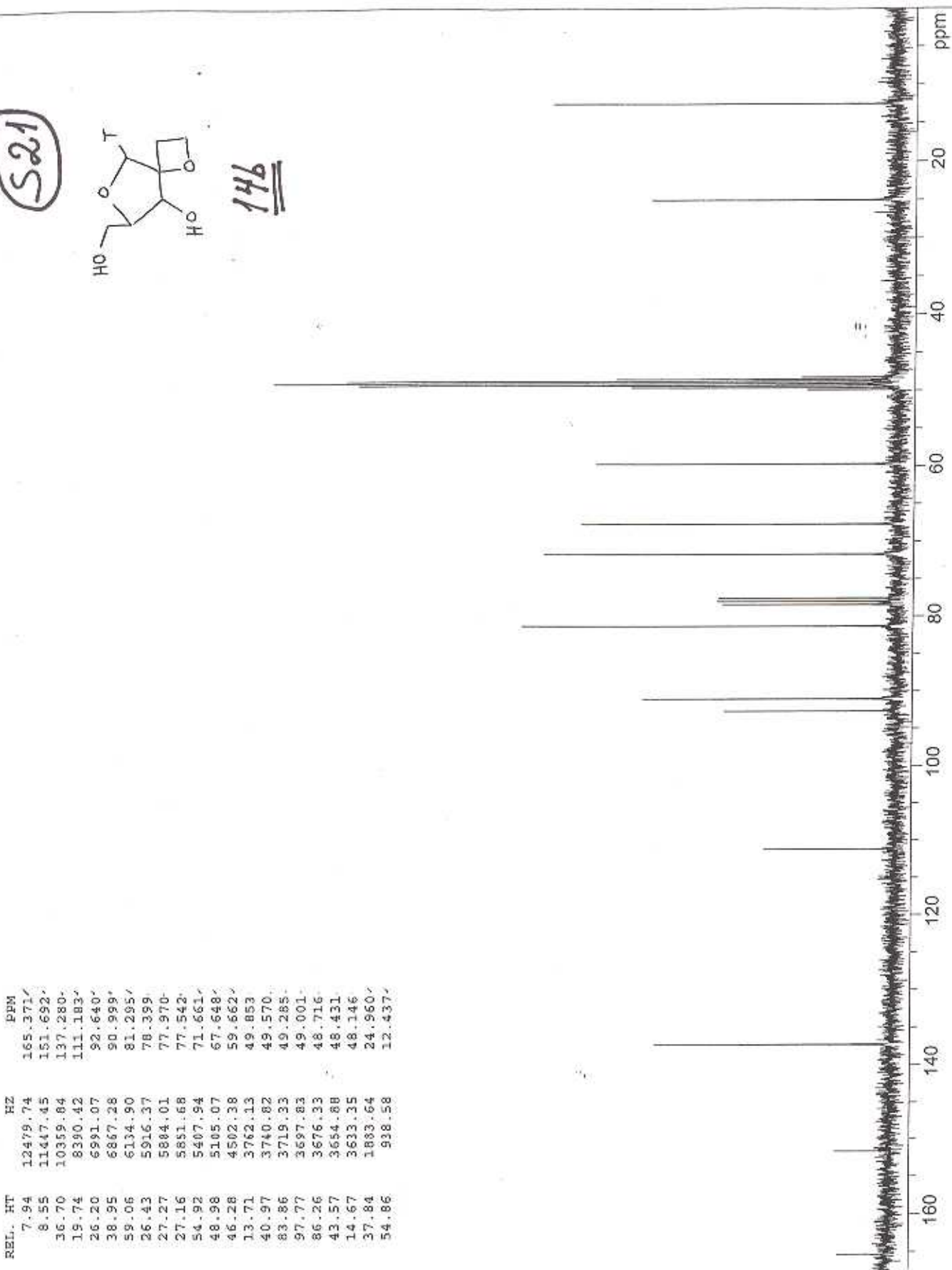
S21



146

Interpolated Peak Listing

PEAK	POINT	HEIGHT	REL. HT	HZ	PPM
1	14647	6998K	7.94	12479.74	165.371
2	18253	7538K	8.55	11447.45	151.692
3	22052	32349K	36.70	10359.84	137.280
4	28932	17403K	19.74	8390.42	111.183
5	33819	23099K	26.20	6991.07	92.640
6	34252	34336K	38.95	6134.90	81.295
7	36810	52058K	59.06	5916.37	78.399
8	37573	23223K	26.43	5884.01	77.970
9	37686	24041K	27.27	5851.68	77.542
10	37799	23940K	27.16	5407.94	71.661
11	39349	48408K	54.92	5105.07	67.648
12	40407	43176K	48.98	4502.38	59.662
13	42512	40795K	46.28	3762.13	49.853
14	45098	12087K	13.71	3740.82	49.570
15	45173	36117K	40.97	3719.33	49.285
16	45248	73918K	83.86	3697.83	49.001
17	45323	86182K	97.77	3676.33	48.716
18	45398	76041K	86.26	3654.88	48.431
19	45473	38404K	43.57	3633.35	48.146
20	45548	12935K	14.67	1833.64	24.960
21	51660	33356K	37.84	938.58	12.437
22	54961	48336K	54.86		



ray 109
 F1: 75.465
 EX: s2pul

F2: 300.091
 SW1: 18762
 PW: 8.8 usec

OF1: 7292.1
 NA: 1024
 PD: 1.2 sec

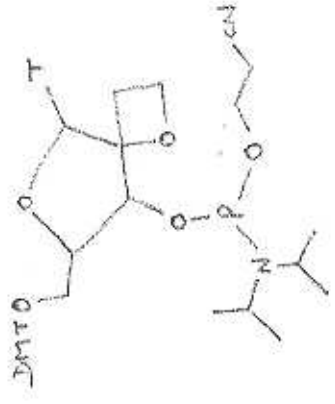
PTSD: 65536
 LB: 1.0

USER: DATE: Jan 2 2002
 WinNuts - \$ray0102.109

S22

make of spectra

15



PEAK	POINT	HEIGHT	REL. HT	HZ	PPM
1	21952	89937K	99.16	18511.31	152.369
2	22498	85998K	94.82	18178.47	149.629
3	32769	42628K	47.00	11909.33	98.027

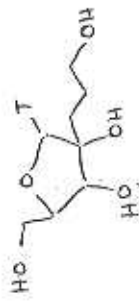
Interpolated Peak Listing

run 110	USER: DATE: May 25 2001				
F1: 121.490	F2: 300.091	SW1: 40000	OF1: 11909.9	PTSId: 65536	
EX: s2pul	PW: 10.0 usec	PD: 1.0 sec	NA: 512	LB: 5.0	WinNuts - \$rav0325.110



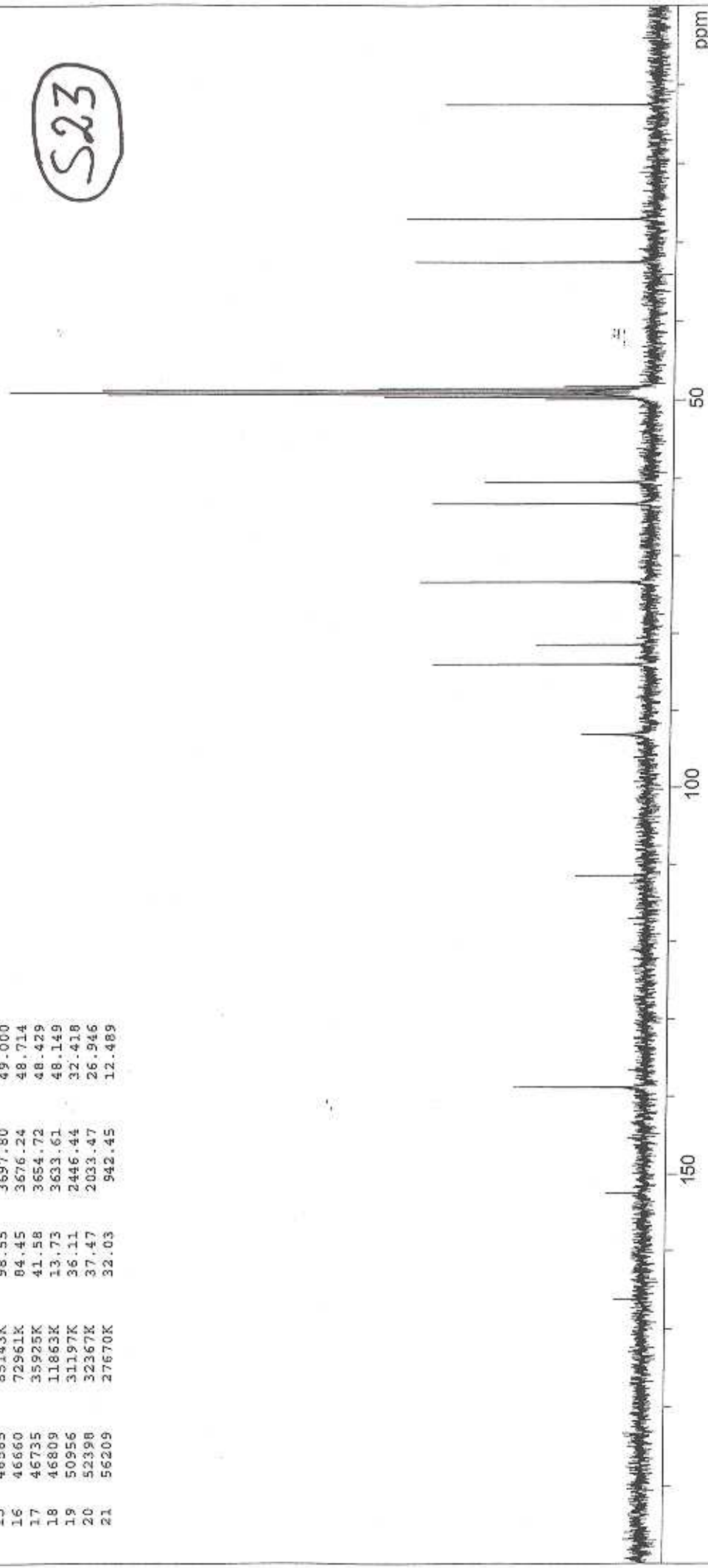
Interpolated Peak Listing

PEAK	POINT	HEIGHT	REL. HT	HZ	PPM
1	15688	3818K	4.42	12843.18	166.211
2	19283	5172K	5.99	11513.84	152.571
3	22922	17201K	19.91	10472.04	138.766
4	30128	9662K	11.18	8409.13	111.430
5	34974	8892K	10.29	7021.75	93.046
6	37370	28469K	32.95	6335.80	83.956
7	38036	15238K	17.64	6145.21	81.431
8	40165	30135K	34.88	5535.60	73.353
9	42829	28505K	33.00	4773.15	63.249
10	43559	21802K	25.24	4564.06	60.479
11	46360	14334K	16.59	3762.13	49.852
12	46435	35141K	40.68	3740.60	49.567
13	46475	4414K	5.11	3728.86	49.412
14	46510	71862K	83.18	3719.30	49.285
15	46585	85143K	98.55	3697.80	49.000
16	46660	72961K	84.45	3676.24	48.714
17	46735	35925K	41.58	3654.72	48.429
18	46809	11863K	13.73	3633.61	48.149
19	50956	31197K	36.11	2446.44	32.418
20	52398	32367K	37.47	2033.47	26.946
21	56209	27670K	32.03	942.45	12.489



16

S23

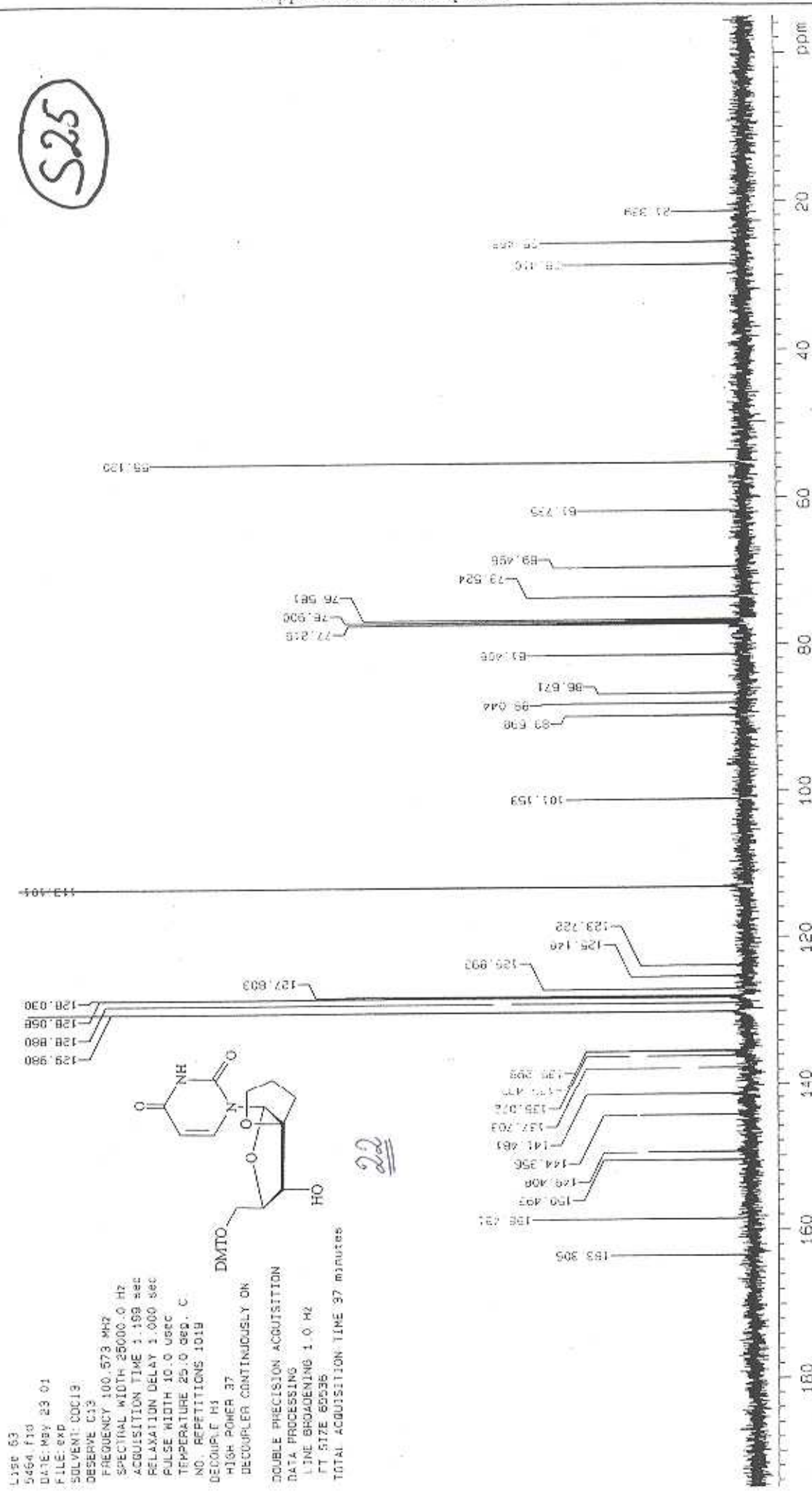


ray.190

F1: 75.465	F2: 300.092	SW1: 18762	OF1: 7653.4	PTS1d: 65536	USER: DATE: May 2 2002
EX: s2pul		PW: 8.8 usec	NA: 1024	LB: 1.0	WinNuts - \$ray0502.190

Appendiks 4 NMR-spektre

S25

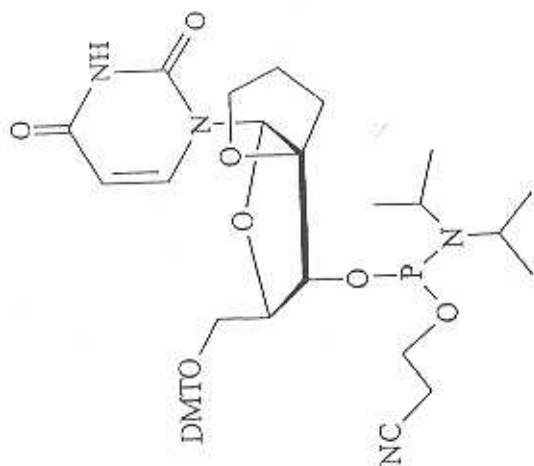


Appendiks 4 NMR-spektre

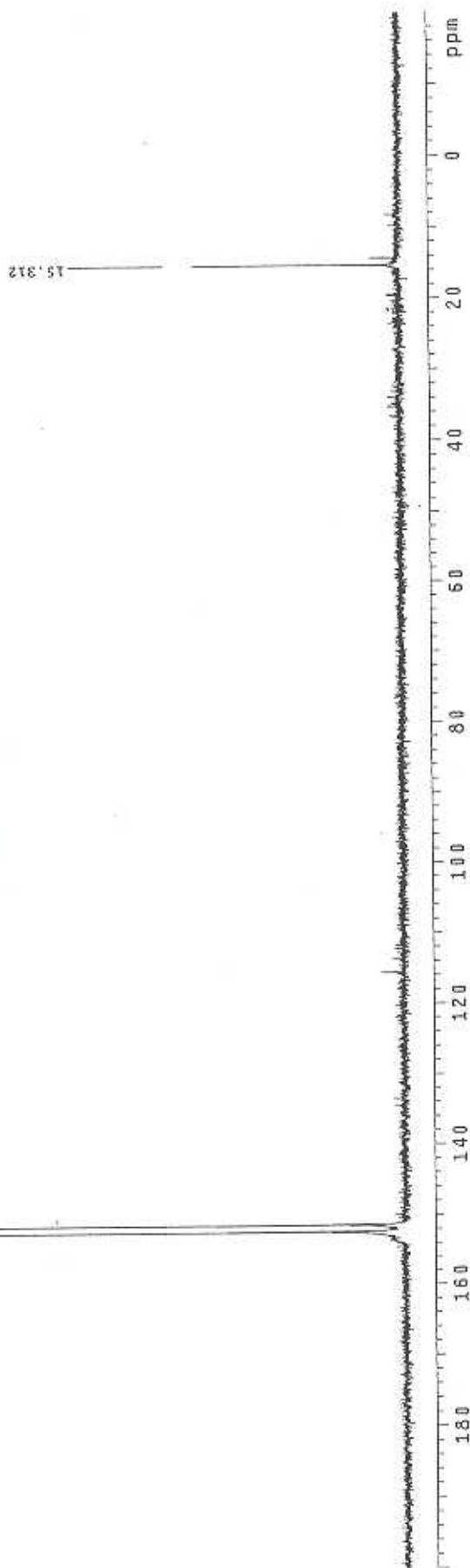
S26

```

L11se73A
R22007
exp1 s2pu1
SAMPLE
date Jun 26 2001 temp not used
solvent COCl2 gain not used
file exp hst not used
ACQUISITION
sw 26724.1 hst 0.008
at 1.600 a1fa 28.000
f1 85504 n
f2 14800 n
de 16 n
al 0 n
ct 1024 ns
CT TRANSMITTER 805 lb 2.00
fn not used
sfrq 121.484 DISPLAY ON
tof 10594.8 sp -229.5
tpwr 63 wd -26724.1
pw 10.888 rfi 28.000
DECOUPLER H1 rfp 0
d1 0 tp -477.2
dm 0 lp -529.4
dmm yvy wc 250
dpwr 42 sc 120
dmf 10900 tb 5
al no ph
    
```

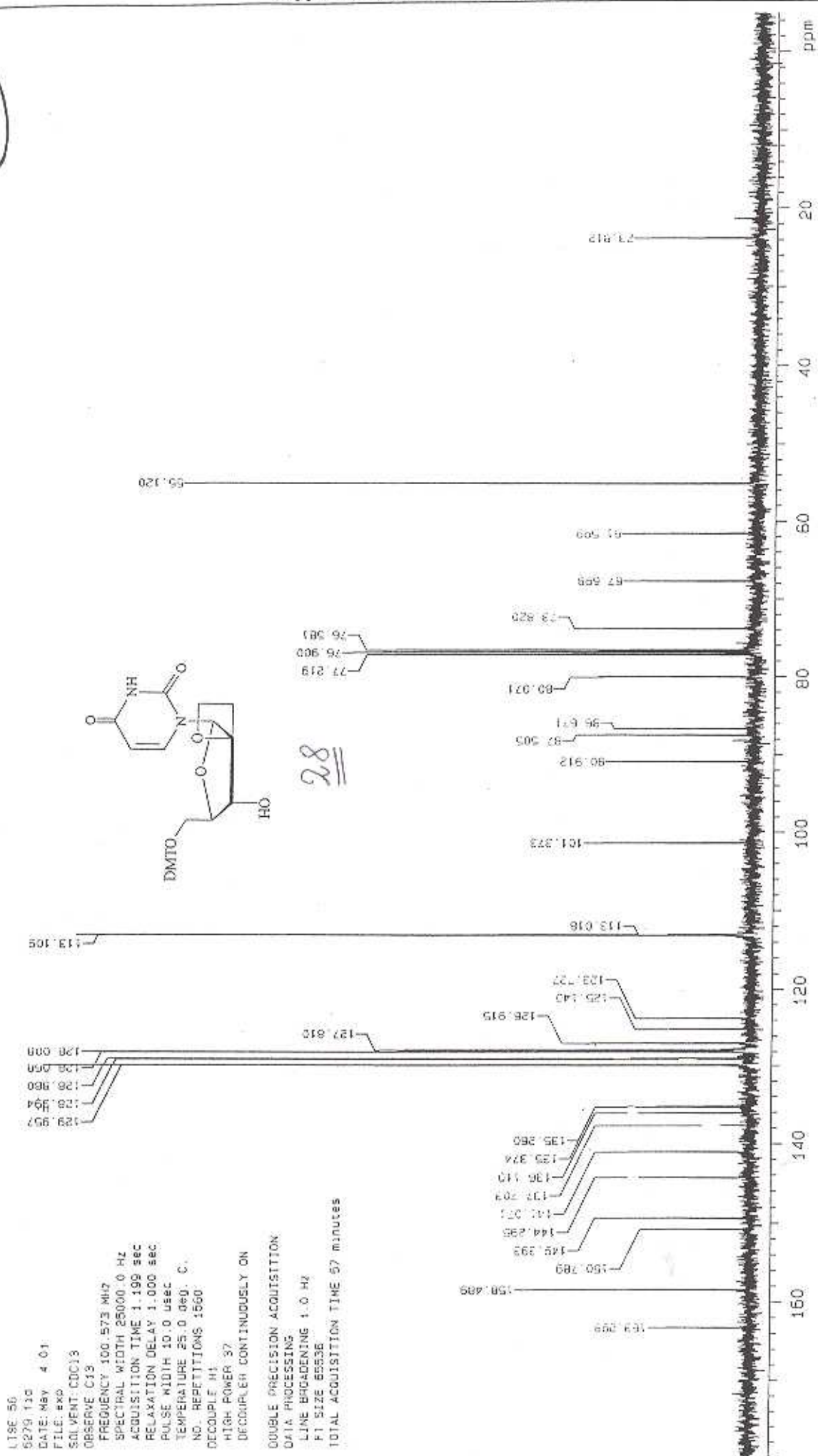


23



Appendiks 4 NMR-spektre

S28

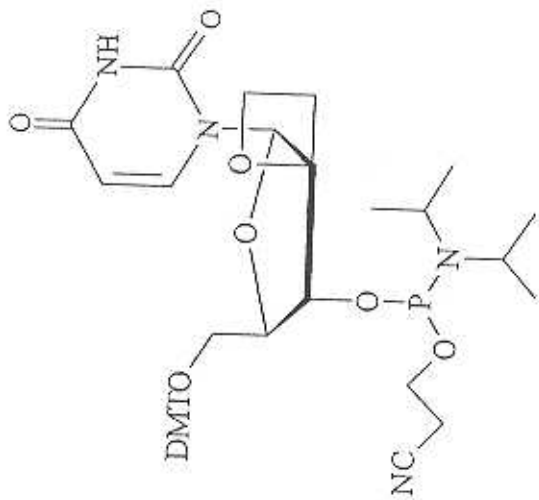


S29

```

Lise76
S2856
exp1 s2pu1
SAMPLE
date Jul 27 2001
solvent CDCl3
file
ACQUISITION
sw 26724.1
at 1.500
np 85504
fb 14800
ds 16
di 0
nt 1024
ct 1024
TRANSMITTER
Ln P31
sfrq 121.484
tof 10594.8
tpwr 58
pw 10.858
DECOUPLER
dn H1
dof 0
dm yvy
dmm W
dppr 42
daf 10800
SPECIAL
temp not used
gain not used
spin not used
rst 0.008
pw90 = 28.000
a17a
FLAGS
n
n
y
nn
nn
PROCESSING
2.00
not used
DISP1
2229.5
26724.1
2229.5
rf1
rfp
rfp
160.5
288.6
PLOT
250
471
12
151
no ph

```



S29

